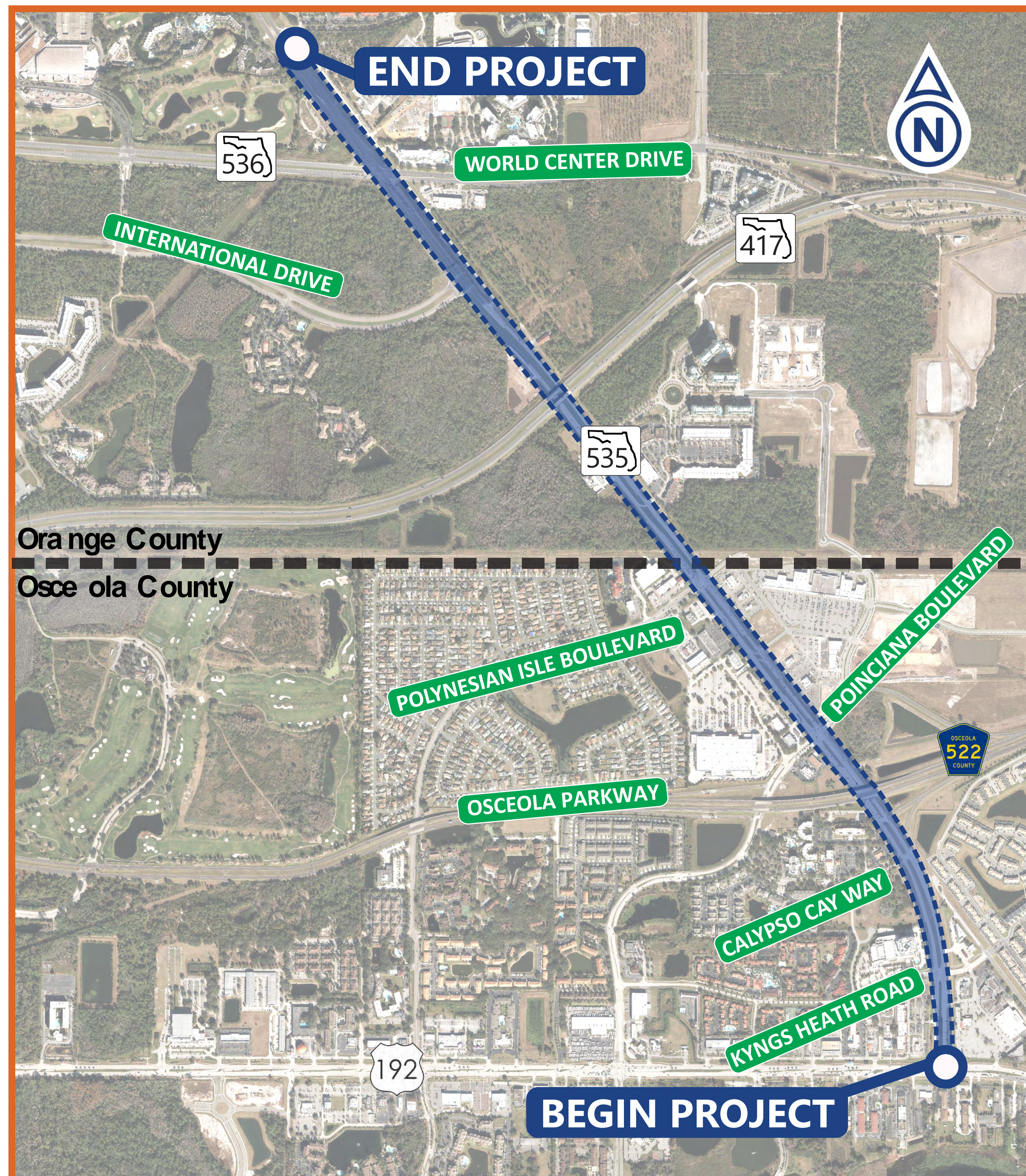


About This Project

What is the Need for this Study?

The project is needed to improve traffic operations and mobility, reduce congestion, and enhance safety for all modes of travel, including bicycle and pedestrian connectivity.



What is the Purpose of this Study?

The purpose of this PD&E Study is to develop solutions, known as alternatives, that improve operations along S.R. 535, accommodate future traffic demand, and improve safety.

