



# Truck Parking Central Florida Corridor

Westbound Volusia County Site

## Utility Assessment Package

Volusia County, Florida

**FDOT Office**  
District Five

**Authors**  
Inwood Consulting Engineers, Inc.

**Date of Publication**  
October 2023

*Financial Management No. 446445-4*

*The environmental review, consultation, and other actions required by applicable Federal environmental laws for this project are being, or have been, carried out by the Florida Department of Transportation (FDOT) pursuant to 23 U.S.C. §327 and a Memorandum of Understanding dated May 26, 2022, and executed by Federal Highway Administration and FDOT.*

---

---

[Page intentionally left blank for two-sided printing]

---

## **TABLE OF CONTENTS**

	<b><u>PAGE</u></b>
1.0 INTRODUCTION .....	4
1.1 PURPOSE OF UTILITIES ASSESSMENT PACKAGE .....	5
1.2 EXISTING ROADWAY FACILITIES .....	5
1.3 PROPOSED ROADWAY IMPROVEMENTS .....	8
2.0 EXISTING UTILITIES .....	10
2.1 UTILITY OWNERS/PROVIDERS AND LOCATIONS .....	10
3.0 UTILITY MITIGATION AND COST.....	11

### **FIGURES**

Figure 1 Recommended Truck Parking Sites Location Map.....	6
Figure 2 Project Location Map .....	7
Figure 3 Truck Parking Site Layout.....	9

### **TABLES**

Table 1 Summary of Utility Contact Information.....	10
Table 2 Existing Utilities and Estimated Relocation Cost.....	10
Table 3 Summary of Potential Utility Easements Identified.....	11

### **APPENDICES**

Appendix 1	Utility Contact Letters
Appendix 2	Utility Responses
Appendix 3	PD&E Project Recommended Alternative Plan Sheets

## 1.0 INTRODUCTION

The Florida Department of Transportation (FDOT), District Five, is conducting the *Truck and Freight Alternative Site Analysis Project Development and Environment (PD&E) Study* to evaluate potential truck and freight parking sites along or near the I-4 corridor in Osceola, Orange, Seminole, and Volusia counties that are viable for private and public operator. The study limits extend from Osceola County north to Volusia County encompassing a 75-mile-long project study area and spanning approximately one mile from I-4 within the four counties. In heavily industrialized areas, the initial study area was expanded to approximately three to five miles from the I-4 corridor. An initial screening of the study area was conducted to identify alternatives that met the purpose and need for the project. The initial alternatives were further screened to identify viable alternatives that minimize environmental and community impacts. As a result of the engineering and environmental analyses completed during the PD&E Study, five recommended sites are being advanced for project development and are programmed for the final Design phase. A regional map showing the location of the recommended site for I-4 Westbound in Volusia County (designated Volusia County Site 1B) is provided in **Figure 1**.

This Utility Assessment Package is for Volusia County Site 1B. Florida has experienced tremendous growth in people and goods over the last few decades and continued growth is expected. In 2018, FDOT conducted a statewide truck parking study to assess existing truck parking and future demand. The study found the I-4 corridor is the most critical corridor for truck parking needs in the state, specifically between the Osceola/Polk County Line and I-95. Based on that study, the I-4 corridor within FDOT District 5 was found to need 481 truck parking spaces today, however there are currently only 36 truck parking spaces available throughout the I-4 corridor located at the Longwood Truck Parking facility. The five sites recommended as part of the PD&E Study will provide a total of approximately 1,011 truck parking spaces to accommodate existing and future needs.

Volusia County Site 1B (**Figure 2**) is located along I-4 approximately 4.5 miles west of the I-95 interchange. The recommended site will supply 253 truck parking spaces and a centralized restroom facility. Eight-foot sidewalks will be provided around the recommended site to allow pedestrians to safely walk from their individual truck parking spot to the restroom facility.

The recommended site is anticipated to require 116.8 acres of right-of-way (ROW), impacting one parcel publicly owned by the City of Daytona Beach. Wildlife fencing and wildlife-sensitive lighting will be provided around the recommended site due to the proximity of the existing wildlife crossing. Ramps will be provided on I-4 Westbound for direct access to and from Volusia County Site 1B. No local road access will be provided to the site.

The recommended Volusia County Site 1B will include two wet detention ponds for a combined area of 10.17 acres and a floodplain compensation area of 2.20 acres. The



proposed ROW for the site includes a proposed conservation area (43.2 acres) and contiguous wildlife corridor (36.5 acres) outside the limits of construction and surrounding the fenced truck parking area to provide an enhanced natural buffer. The proposed conservation and wildlife corridor total approximately 79.7 acres of the 116.8 acre site and will remain as existing (undeveloped) with no site clearing.

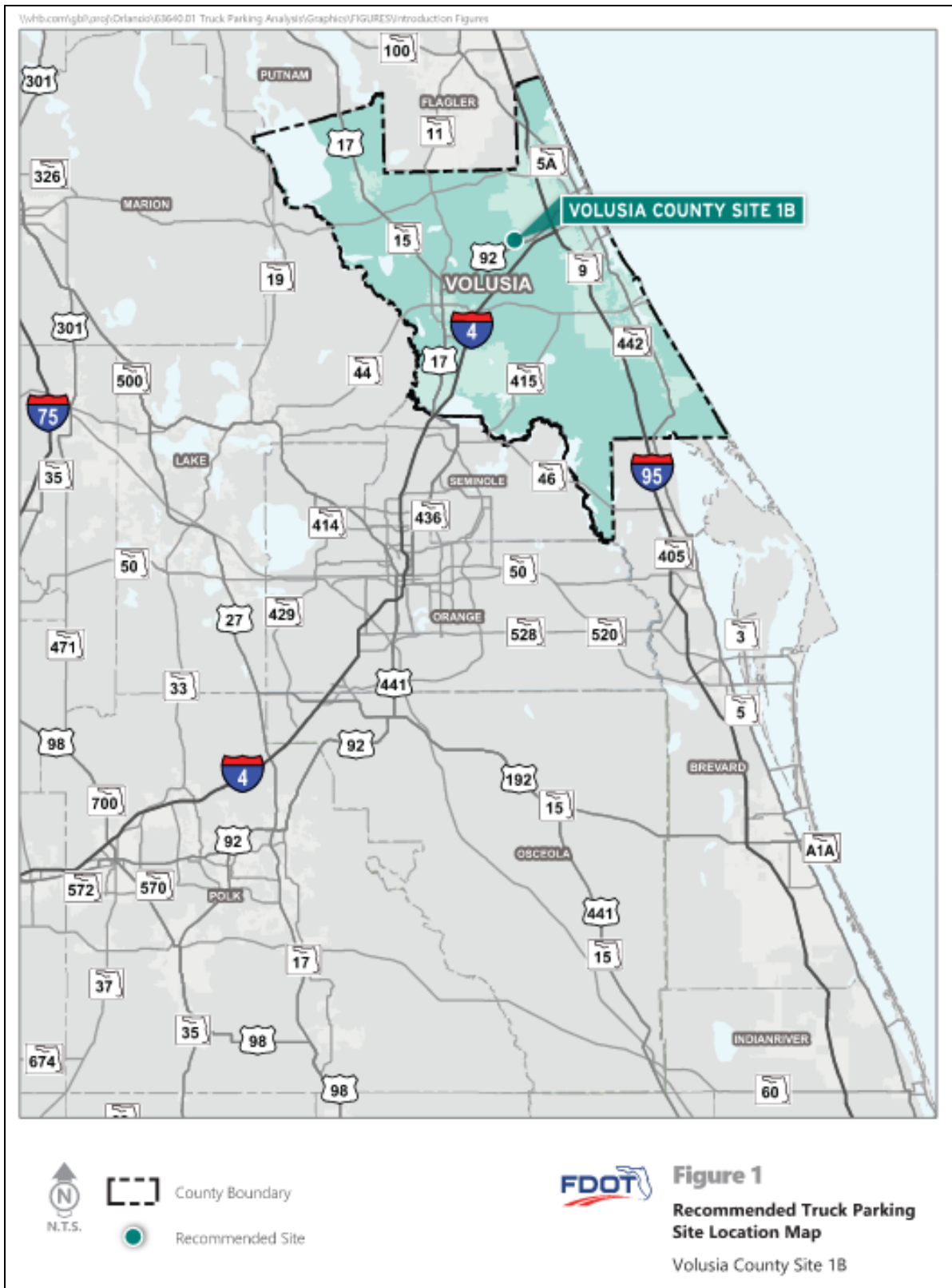
Additional information about the site is provided in the Preliminary Engineering Report for the *Truck and Freight Alternative Site Analysis PD&E Study* (FPID:447724-1-22-01).

### **1.1 Purpose of Utilities Assessment Package**

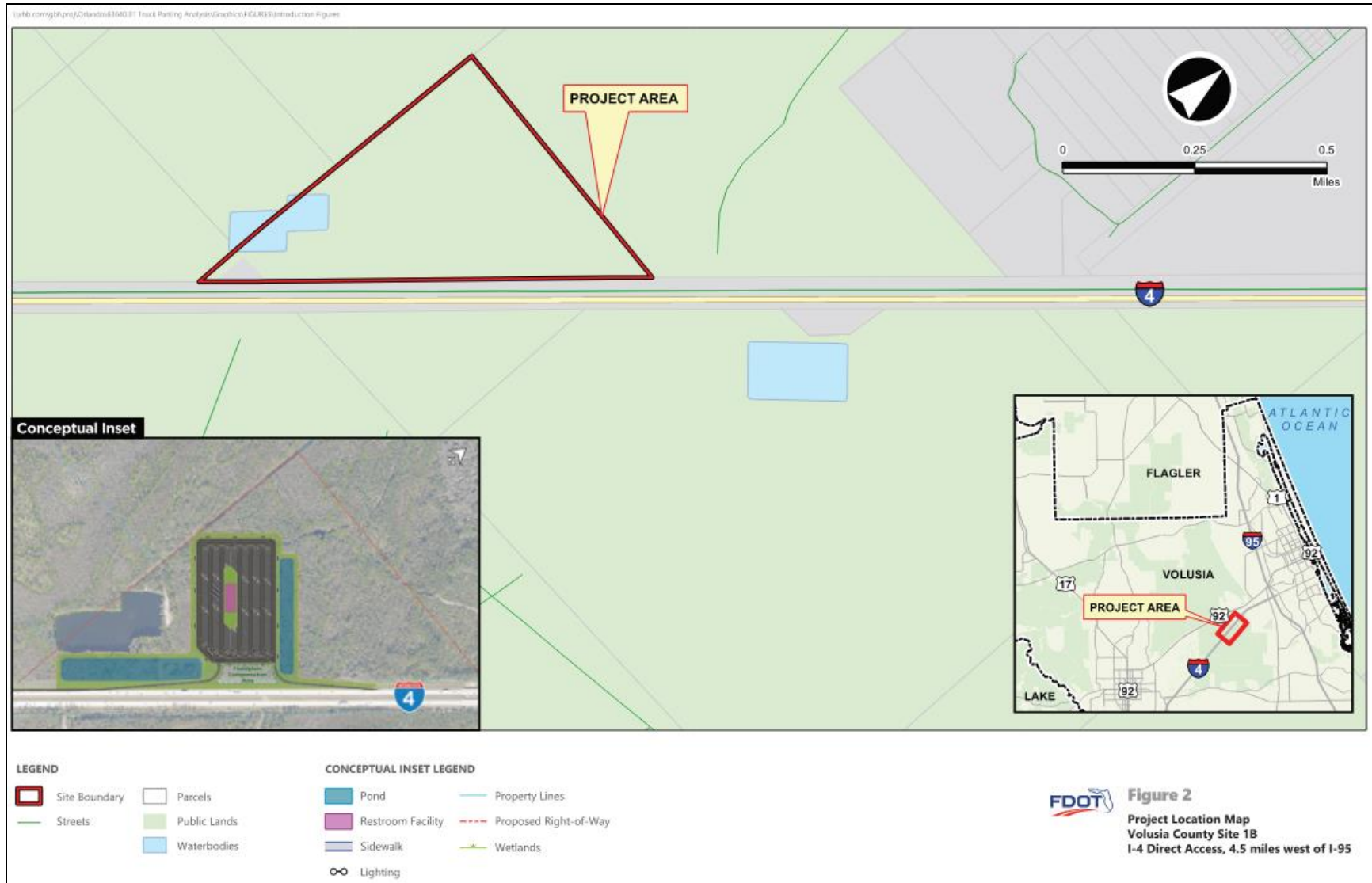
This utilities assessment package has been assembled to provide information on existing and planned utilities for Volusia County Site 1B. This package contains information on the names of utility companies, arials denoting the location of major existing and proposed facilities, the description of each utility identified, and project coordination efforts.

### **1.2 Existing Conditions**

The proposed truck parking location will sit on a currently undeveloped parcel of land.



**Figure 1:** Recommended Truck Parking Sites Location Map



**Figure 2:** Project Location Map – Volusia County Site 1B

### **1.3 Proposed Parking Improvements**

The proposed designated truck parking will have existing connectivity adjacent to existing I-4 limited access facility. The site capacity is 253 parking spaces and will require 116.8 acres of ROW. There will be 0 bridges in this alternative and proposed access will come directly from I-4. There will be no local access. The site layout is as shown in **Figure 3**.





Figure 3: Truck Parking Site Layout – Volusia County Site 1B



## 2.0 EXISTING UTILITIES

The Utility Agency/Owners (UAOs) in the study area were determined using a variety of sources. First, a Sunshine 811 Design Ticket was made to identify the utility providers and operators registered with the locate service. All utilities were verified with the utility providers and operators during the coordination process for the project. A list of the UAOs identified on the project are summarized in **Table 1**.

**Table 1** Summary of Utility Contact Information

Company	Contact	Email Address	Phone #	Utilities in Corridor
AT&T Florida	Kirby Spencer	ks2488@att.com	(386) 366-4588	Unknown
City of Daytona Beach	James Pekala Jim Nelson Darren Greer	pekalahjames@codb.us nelsonjames@codb.us greerd@codb.us	(386) 671-8827 (386) 671-8613 (386) 671-8653	No
City of Port Orange Florida	Junos Reed	jureed@port-orange.org	(386) 506-5756	No
Florida Power and Light-Distribution	Chris Buonanni	christopher.buonanni@fpl.com	(407) 328-1911	No
Florida Power and Light Transmission	Thomas (Tom) Colucci	thomas.colucci@fpl.com	(315) 219-7458	No

## 2.1 Utility Owners/Providers and Locations

All of the utility providers and operators were contacted in March 9, 2023 and were provided aerial maps of the project for review. Copies of these coordination letters can be found in **Appendix 1**. Based on the aerial maps, UAOs were asked to assist in locating and identifying their existing and planned facilities within the area of study. Through mark-ups and/or verbal descriptions, most utility providers or operators provided information on the location and type of existing facilities and information on the planned facilities anticipated in the future. At the time of utility contact efforts, none of the UAOs indicated any future planned facilities or upgrades to existing facilities within the project limits. The responses from the utility providers are found in **Appendix 2**. A description of the existing facilities and associated relocation costs are outlined in **Table 2**.

**Table 2** Existing Utilities and Estimated Relocation Cost

Company	Description	Relocation Cost
AT&T Florida	<ul style="list-style-type: none"> <li>No facilities</li> </ul>	\$0

Company	Description	Relocation Cost
City of Daytona Beach	<ul style="list-style-type: none"> <li>No facilities</li> </ul>	\$0
City of Port Orange Florida	<ul style="list-style-type: none"> <li>No facilities</li> </ul>	\$0
Florida Power and Light-Distribution	<ul style="list-style-type: none"> <li>No facilities</li> </ul>	\$0
Florida Power and Light Transmission	<ul style="list-style-type: none"> <li>No facilities</li> </ul>	\$0

### 3.0 UTILITY MITIGATION AND COST

Due to the nature of the existing conditions throughout the project area, it is anticipated that the Volusia County Truck Parking Site 1B will not impact any utilities. The extent of the site improvements is shown in the recommended alternative conceptual plans included in [Appendix 3](#).

At the date of contact, no relocations of facilities located in easements were identified. If utilities eligible for reimbursement are located during the design phase, all measures will be taken to avoid impacting facilities identified in lands of compensable interest. [Table 3](#) outlines companies that have been contacted regarding potential easements on the project. Utility coordination should be performed during the design phase of the project to clearly identify all utility easements and potential reimbursable relocations on the project.

**Table 3** Summary of Potential Utility Easements Identified

Company	General Easement Description
AT&T Florida	<ul style="list-style-type: none"> <li>N/A</li> </ul>
City of Daytona Beach	<ul style="list-style-type: none"> <li>N/A</li> </ul>
City of Port Orange Florida	<ul style="list-style-type: none"> <li>N/A</li> </ul>
Florida Power and Light-Distribution	<ul style="list-style-type: none"> <li>N/A</li> </ul>
Florida Power and Light Transmission	<ul style="list-style-type: none"> <li>N/A</li> </ul>

# **Appendix 1**

## **Utility Contact Letters**



## Kate Guevara

---

**From:** Melonie Schwartz  
**Sent:** Thursday, March 9, 2023 1:34 AM  
**To:** ks2488@att.com; PeKalaJames@codb.us; NelsonJames@CODB.US; greerd@codb.us; jureed@port-orange.org; Christopher.buonanni@fpl.com; Colucci, Thomas; Igor.Didkovsky@fpl.com; Martin.Mikhail@fpl.com  
**Cc:** David Ledgerwood; Kate Guevara  
**Subject:** Truck Parking Site - Port Orange WB I-4 - Utility Coordination  
**Attachments:** Truck Parking Site - Port Orange WB I-4 .pdf; Project Location Map - Truck Parking Site - Port Orange WB I-4 .pdf

**Importance:** High

**Contacts:** Kate Guevara

This contact is being done completely electronically, but if you need anything in a hard copy format, please let me know.

**County:** Volusia  
**Location:** Port Orange WB I-4  
**Phase Submittal:** Preliminary Submittal  
**Description:** Truck Parking Volusia County Site 1B

Inwood Consulting Engineers has been selected to represent FDOT District 5 in utility coordination between DOT District 5 and your agency on the above referenced project. Please address all correspondence, verbal and written to Inwood. Further correspondence with FDOT District 5 could delay a timely response. We are looking forward to working with you in this endeavor.

FDOT District 5 proposes a designated truck parking site at the above designated location, as shown by the site descriptions attached. Facilities owned by you may require relocation and/or adjustment, as necessitated by the FDOT District 5 construction.

If you have facilities within the project limits, please markup the site description (**color code – green**) to indicate your facility locations, which shall include verification and plotting the exact location of your existing facilities including both horizontal and vertical information, the approximate boundaries of easements, fee title, or other property interests you may own between the existing right of way line and the outside limits as indicated on the plans. The marked plans are to be returned to my office no later than **April 5, 2023**. Please let us know if there is anything we can do to assist with the completion of the green line mark-ups.

Thank you in advance for your cooperation. If you have any questions concerning this matter, Melonie Schwartz can be reached at 407-971-8850 or by email at [mschwartz@inwoodinc.com](mailto:mschwartz@inwoodinc.com) or Kate Guevara can be reached at 407-971-8850 or by email at [kguevara@inwoodinc.com](mailto:kguevara@inwoodinc.com).

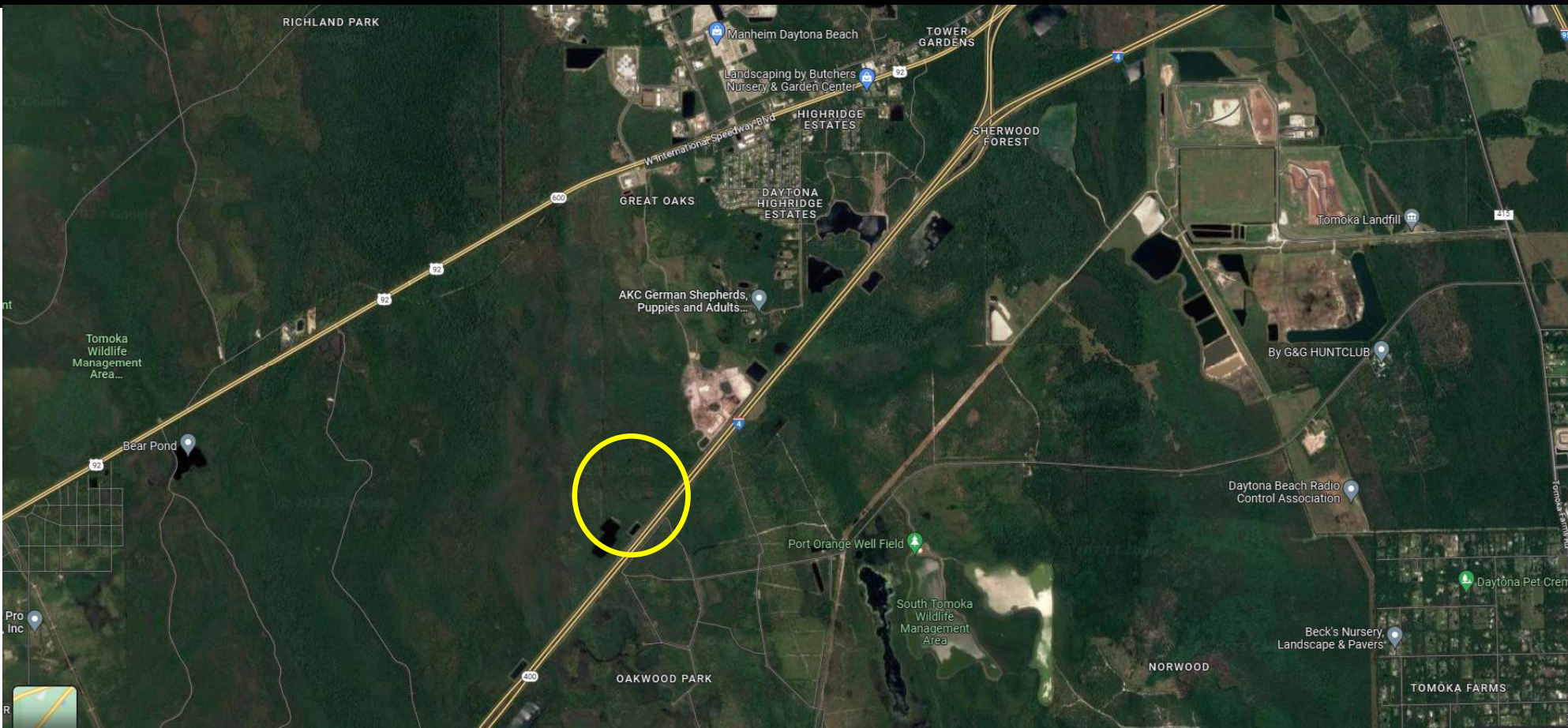
Sincerely,  
**Melonie Schwartz**  
UTILITY COORDINATION MANAGER

---

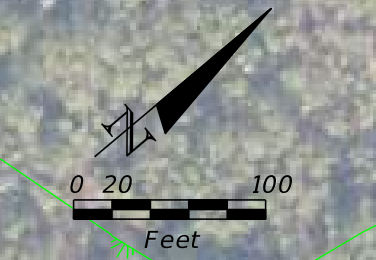
**INWOOD CONSULTING ENGINEERS**  
3000 Dovera Dr., Suite 200, Oviedo, FL 32765  
C: 407-242-4981  
P: 407-971-8850

# Project Location Map – Port Orange WB 1B Site

Coordinates: 29.106789164047917, -81.14767558291817







**LEGEND**  
--- PROPOSED R/W  
--- PARCEL LINE  
--- WETLANDS  
--- PROPOSED POND  
--- PROPOSED FENCE  
TRUCK PARKING SPACES = 253  
MAINTENANCE VEHICLE PARKING SPACES = 10  
TOTAL POND AREA = 6.823 ACRES  
R/W REQUIRED = 116.827 ACRES





## **Appendix 2**

### **Utility Responses**

## **AT&T Florida**

## Kate Guevara

---

**From:** SPENCER, KIRBY <ks2488@att.com>  
**Sent:** Monday, May 22, 2023 2:13 PM  
**To:** Kate Guevara  
**Subject:** RE: Truck Parking Site - Port Orange EB and WB I-4 - Utility Coordination

So those 2 Volusia County Sites are going to be the same- No ATT-D facilities

Thanks,

### Kirby Spencer

Mgr OSP Plng & Eng Design  
ACE – East Region, Florida Construction & Engineering

### AT&T

[268 N Ridgewood Ave, Room 230, Daytona Beach, FL 32114](#)

O: [386.281.6957](tel:386.281.6957)

M: [386.366.4588](tel:386.366.4588) | [ks2488@att.com](mailto:ks2488@att.com)

- ***All correspondence and coordination herein is with regards to BellSouth Telecommunications, LLC d/b/a AT&T Florida (ATT-D) which is not responsible for facilities owned and managed by AT&T Corp (ATT-T). Any questions with regards to ATT-T facilities should be addressed to [Inquiries@pea-inc.net](mailto:Inquiries@pea-inc.net)".***
- *This email and any attachments are confidential AT&T property intended solely for the recipients. If you received this message in error, please notify me and immediately delete this message from your computer. Any retention, distribution or other use of this email is strictly prohibited.*

---

**From:** SPENCER, KIRBY <ks2488@att.com>  
**Sent:** Monday, May 22, 2023 6:34 AM  
**To:** Kate Guevara <kguevara@inwoodinc.com>  
**Subject:** Re: Truck Parking Site - Port Orange EB and WB I-4 - Utility Coordination

Kate,  
Apologies- I will send those TODAY. There was a spot I had someone check on Friday.

Thanks,

### Kirby Spencer

Mgr OSP Plng & Eng Design  
ACE – East Region, Florida Construction & Engineering

### AT&T

[268 N Ridgewood Ave, Room 230, Daytona Beach, FL 32114](#)

O: [386.281.6957](tel:386.281.6957)

M: [386.366.4588](tel:386.366.4588) | [ks2488@att.com](mailto:ks2488@att.com)

- ***All correspondence and coordination herein is with regards to BellSouth Telecommunications, LLC d/b/a AT&T Florida (ATT-D) which is not responsible for***

**facilities owned and managed by AT&T Corp (ATT-T). Any questions with regards to ATT-T facilities should be addressed to [Inquiries@pea-inc.net](mailto:Inquiries@pea-inc.net)".**

- *This email and any attachments are confidential AT&T property intended solely for the recipients. If you received this message in error, please notify me and immediately delete this message from your computer. Any retention, distribution or other use of this email is strictly prohibited.*

---

**From:** Kate Guevara <[kguevara@inwoodinc.com](mailto:kguevara@inwoodinc.com)>  
**Sent:** Thursday, May 18, 2023 10:15:59 AM  
**To:** SPENCER, KIRBY <[ks2488@att.com](mailto:ks2488@att.com)>  
**Subject:** RE: Truck Parking Site - Port Orange EB and WB I-4 - Utility Coordination

I saw that you responded on the Monroe Rd. Truck Parking site in Seminole, but we are still looking for the Volusia sites.

Thank you!

**Kate Guevara, PE**  
PROJECT ENGINEER

---

**INWOOD CONSULTING ENGINEERS**  
3000 Dovera Dr., Suite 200, Oviedo, FL 32765  
P: 407-971-8850  
[inwoodinc.com](http://inwoodinc.com)

---

**From:** SPENCER, KIRBY <[ks2488@att.com](mailto:ks2488@att.com)>  
**Sent:** Thursday, May 18, 2023 10:12 AM  
**To:** Kate Guevara <[kguevara@inwoodinc.com](mailto:kguevara@inwoodinc.com)>; Melonie Schwartz <[mschwartz@inwoodinc.com](mailto:mschwartz@inwoodinc.com)>  
**Subject:** Re: Truck Parking Site - Port Orange EB and WB I-4 - Utility Coordination

Kate,  
I thought you got those docs. Give me couple hours and I'll be back in office and send.

Thanks,

**Kirby Spencer**  
Mgr OSP Plng & Eng Design  
ACE – East Region, Florida Construction & Engineering

**AT&T**  
[268 N Ridgewood Ave, Room 230, Daytona Beach, FL 32114](http://268 N Ridgewood Ave, Room 230, Daytona Beach, FL 32114)  
O: [386.281.6957](tel:386.281.6957)  
M: [386.366.4588](tel:386.366.4588) | [ks2488@att.com](mailto:ks2488@att.com)

- ***All correspondence and coordination herein is with regards to BellSouth Telecommunications, LLC d/b/a AT&T Florida (ATT-D) which is not responsible for facilities owned and managed by AT&T Corp (ATT-T). Any questions with regards to ATT-T facilities should be addressed to [Inquiries@pea-inc.net](mailto:Inquiries@pea-inc.net)".***
- *This email and any attachments are confidential AT&T property intended solely for the recipients. If you received this message in error, please notify me and immediately delete this message from your computer. Any retention, distribution or other use of this email is strictly prohibited.*

---

**From:** Kate Guevara <[kguevara@inwoodinc.com](mailto:kguevara@inwoodinc.com)>  
**Sent:** Thursday, May 18, 2023 10:10:16 AM  
**To:** SPENCER, KIRBY <[ks2488@att.com](mailto:ks2488@att.com)>; Melonie Schwartz <[mschwartz@inwoodinc.com](mailto:mschwartz@inwoodinc.com)>  
**Subject:** RE: Truck Parking Site - Port Orange EB and WB I-4 - Utility Coordination

This contact is being done completely electronically, but if you need anything in a hard copy format, please let me know.

**County:** Volusia  
**Location:** Port Orange EB and WB I-4  
**Phase Submittal:** Preliminary Submittal  
**Description:** Truck Parking Volusia County Site 1A

Kirby,

This is a reminder that we are still in need of a response about your facilities in Port Orange at the Truck Parking locations on EB and WB I-4.

Thanks,

**Kate Guevara, PE**  
PROJECT ENGINEER

---

**INWOOD CONSULTING ENGINEERS**  
3000 Dovera Dr., Suite 200, Oviedo, FL 32765  
P: 407-971-8850  
[inwoodinc.com](http://inwoodinc.com)

---

**From:** SPENCER, KIRBY <[ks2488@att.com](mailto:ks2488@att.com)>  
**Sent:** Tuesday, May 2, 2023 10:21 AM  
**To:** Kate Guevara <[kguevara@inwoodinc.com](mailto:kguevara@inwoodinc.com)>; Melonie Schwartz <[mschwartz@inwoodinc.com](mailto:mschwartz@inwoodinc.com)>  
**Subject:** Re: Truck Parking Site - Port Orange EB and WB I-4 - Utility Coordination

Kate,  
Will send you update this afternoon.

Thanks,

**Kirby Spencer**  
Mgr OSP Plng & Eng Design  
ACE – East Region, Florida Construction & Engineering

**AT&T**  
[268 N Ridgewood Ave, Room 230, Daytona Beach, FL 32114](http://268 N Ridgewood Ave, Room 230, Daytona Beach, FL 32114)  
O: [386.281.6957](tel:386.281.6957)  
M: [386.366.4588](tel:386.366.4588) | [ks2488@att.com](mailto:ks2488@att.com)

- **All correspondence and coordination herein is with regards to BellSouth Telecommunications, LLC d/b/a AT&T Florida (ATT-D) which is not responsible for facilities owned and managed by AT&T Corp (ATT-T). Any questions with regards to ATT-T facilities should be addressed to [Inquiries@pea-inc.net](mailto:Inquiries@pea-inc.net)”.**



- *This email and any attachments are confidential AT&T property intended solely for the recipients. If you received this message in error, please notify me and immediately delete this message from your computer. Any retention, distribution or other use of this email is strictly prohibited.*

---

**From:** Kate Guevara <[kguevara@inwoodinc.com](mailto:kguevara@inwoodinc.com)>  
**Sent:** Tuesday, May 2, 2023 10:14:41 AM  
**To:** Melonie Schwartz <[mschwartz@inwoodinc.com](mailto:mschwartz@inwoodinc.com)>; SPENCER, KIRBY <[ks2488@att.com](mailto:ks2488@att.com)>  
**Subject:** RE: Truck Parking Site - Port Orange EB and WB I-4 - Utility Coordination

**This contact is being done completely electronically, but if you need anything in a hard copy format, please let me know.**

**County:** Volusia  
**Location:** Port Orange EB and WB I-4  
**Phase Submittal:** Preliminary Submittal  
**Description:** Truck Parking Volusia County Site 1A

All,

This email serves as a follow up reminder that marked plans for the above referenced project are to be returned to my office **ASAP**. Please indicate any easements / compensable interests on your marked plans.

Please remember that this is a PD&E study, and there is no final design at this time. All SUE data will be completed as part of the final design.

Thank you,

**Kate Guevara, PE**  
PROJECT ENGINEER

---

**INWOOD CONSULTING ENGINEERS**  
3000 Dovera Dr., Suite 200, Oviedo, FL 32765  
P: 407-971-8850  
[inwoodinc.com](http://inwoodinc.com)

---

**From:** Kate Guevara  
**Sent:** Monday, April 3, 2023 5:14 PM  
**To:** Melonie Schwartz <[mschwartz@inwoodinc.com](mailto:mschwartz@inwoodinc.com)>; [ks2488@att.com](mailto:ks2488@att.com); [PeKalaJames@codb.us](mailto:PeKalaJames@codb.us);  
[NelsonJames@CODB.US](mailto:NelsonJames@CODB.US)  
**Subject:** RE: Truck Parking Site - Port Orange EB I-4 - Utility Coordination

**This contact is being done completely electronically, but if you need anything in a hard copy format, please let me know.**

**County:** Volusia  
**Location:** Port Orange EB I-4  
**Phase Submittal:** Preliminary Submittal  
**Description:** Truck Parking Volusia County Site 1A

All,

This email serves as a follow up reminder that marked plans for the above referenced project are to be returned to my office no later than **April 5, 2023**. Please indicate any easements / compensable interests on your marked plans.

Please remember that this is a PD&E study, and there is no final design at this time. All SUE data will be completed as part of the final design.

Thank you,

**Kate Guevara, PE**

PROJECT ENGINEER

---

**INWOOD CONSULTING ENGINEERS**

3000 Dovera Dr., Suite 200, Oviedo, FL 32765

P: 407-971-8850

[inwoodinc.com](http://inwoodinc.com)

---

**From:** Kate Guevara

**Sent:** Thursday, March 16, 2023 11:04 AM

**To:** Melonie Schwartz <[mschwartz@inwoodinc.com](mailto:mschwartz@inwoodinc.com)>; [ks2488@att.com](mailto:ks2488@att.com); [PeKalaJames@codb.us](mailto:PeKalaJames@codb.us); [NelsonJames@CODB.US](mailto:NelsonJames@CODB.US); [jureed@port-orange.org](mailto:jureed@port-orange.org); [Christopher.buonanni@fpl.com](mailto:Christopher.buonanni@fpl.com); Colucci, Thomas <[thomas.colucci@fpl.com](mailto:thomas.colucci@fpl.com)>; [Igor.Didkovsky@fpl.com](mailto:Igor.Didkovsky@fpl.com); [Martin.Mikhail@fpl.com](mailto:Martin.Mikhail@fpl.com)

**Subject:** RE: Truck Parking Site - Port Orange EB I-4 - Utility Coordination

**This contact is being done completely electronically, but if you need anything in a hard copy format, please let me know.**

<b>County:</b>	<b>Volusia</b>
<b>Location:</b>	<b>Port Orange EB I-4</b>
<b>Phase Submittal:</b>	<b>Preliminary Submittal</b>
<b>Description:</b>	<b>Truck Parking Volusia County Site 1A</b>

All,

This email serves as a follow up reminder that marked plans for the above referenced project are to be returned to my office no later than **April 5, 2023**. Please indicate any easements / compensable interests on your marked plans.

Please remember that this is a PD&E study, and there is no final design at this time. All SUE data will be completed as part of the final design.

Thank you,

**Kate Guevara, PE**

PROJECT ENGINEER

---

**INWOOD CONSULTING ENGINEERS**

3000 Dovera Dr., Suite 200, Oviedo, FL 32765

P: 407-971-8850

[inwoodinc.com](http://inwoodinc.com)

---

**From:** Melonie Schwartz <[mschwartz@inwoodinc.com](mailto:mschwartz@inwoodinc.com)>

**Sent:** Thursday, March 9, 2023 1:34 AM

**Cc:** David Ledgerwood <[dledgerwood@inwoodinc.com](mailto:dledgerwood@inwoodinc.com)>; Kate Guevara <[kguevara@inwoodinc.com](mailto:kguevara@inwoodinc.com)>

**Subject:** Truck Parking Site - Port Orange EB I-4 - Utility Coordination

**Importance:** High

This contact is being done completely electronically, but if you need anything in a hard copy format, please let me know.

**County:** Volusia  
**Location:** Port Orange EB I-4  
**Phase Submittal:** Preliminary Submittal  
**Description:** Truck Parking Volusia County Site 1A

Inwood Consulting Engineers has been selected to represent FDOT District 5 in utility coordination between DOT District 5 and your agency on the above referenced project. Please address all correspondence, verbal and written to Inwood. Further correspondence with FDOT District 5 could delay a timely response. We are looking forward to working with you in this endeavor.

FDOT District 5 proposes a designated truck parking site at the above designated location, as shown by the site descriptions attached. Facilities owned by you may require relocation and/or adjustment, as necessitated by the FDOT District 5 construction.

If you have facilities within the project limits, please markup the site description (**color code – green**) to indicate your facility locations, which shall include verification and plotting the exact location of your existing facilities including both horizontal and vertical information, the approximate boundaries of easements, fee title, or other property interests you may own between the existing right of way line and the outside limits as indicated on the plans. The marked plans are to be returned to my office no later than **April 5, 2023**. Please let us know if there is anything we can do to assist with the completion of the green line mark-ups.

Thank you in advance for your cooperation. If you have any questions concerning this matter, Melonie Schwartz can be reached at 407-971-8850 or by email at [mschwartz@inwoodinc.com](mailto:mschwartz@inwoodinc.com) or Kate Guevara can be reached at 407-971-8850 or by email at [kguevara@inwoodinc.com](mailto:kguevara@inwoodinc.com).

Sincerely,

**Melonie Schwartz**  
UTILITY COORDINATION MANAGER

---

**INWOOD CONSULTING ENGINEERS**  
3000 Dovera Dr., Suite 200, Oviedo, FL 32765  
C: 407-242-4981  
P: 407-971-8850  
[inwoodinc.com](http://inwoodinc.com)  
[mschwartz@inwoodinc.com](mailto:mschwartz@inwoodinc.com)

# **City of Daytona Beach**

**Kate Guevara**

---

**From:** PeKala, James <PeKalaJames@CODB.US>  
**Sent:** Wednesday, April 26, 2023 8:00 AM  
**To:** Kate Guevara; Melonie Schwartz; SPENCER, KIRBY  
**Cc:** Kean, Donald  
**Subject:** RE: Truck Parking Site - Port Orange EB and WB I-4 - Utility Coordination

Ms. Guevara,

The City of Daytona Beach has no facilities in this area.

*Thank you for your time and consideration with this project. If you have any questions or require additional information contact me by telephone at (386)671-8827, OR EMAIL AT [PEKALAJAMES@CODB.US](mailto:PEKALAJAMES@CODB.US).*

*Sincerely,*

*James M. PeKala*

*Engineering Design/Utilities Project Manager*



*City of Daytona Beach  
Utilities Engineering Department  
125 Basin Street, Ste. 100  
Daytona Beach, FL 32114-5090  
E-mail: [pekalajames@codb.us](mailto:pekalajames@codb.us)  
office: (386) 671-8827  
fax: (386) 671-5952*

*"inch by inch the world a cinch, yard by yard the world so hard"*

*"May all of us be there and help someone else out when they really need it and may we be aware of what the need is!"*

**DISCLAIMER: As-built drawings, record drawings, design plans, GIS maps, modeling results and any other associated information must be accepted and used for general planning purposes only. As such, the City of Daytona Beach provides no warranties, expressed or implied, concerning the accuracy, completeness or reliability or suitability of this data for any other particular use. Furthermore, the City of Daytona Beach assumes no liability whatsoever associated with the use or misuse of such data. The City of Daytona Beach makes no warranty, representation or guarantee as to the content, sequence, accuracy, timeliness or completeness of any of the information. In no event shall the City of Daytona Beach be liable to the recipient or any other party for damages of any type, including but not limited to incidental, consequential or exemplary damages arising out of the use or inability to use this information.**

---

**From:** Kate Guevara <kguevara@inwoodinc.com>  
**Sent:** Tuesday, April 25, 2023 2:45 PM  
**To:** Melonie Schwartz <mschwartz@inwoodinc.com>; SPENCER, KIRBY <ks2488@att.com>; PeKala, James <PeKalaJames@CODB.US>  
**Subject:** RE: Truck Parking Site - Port Orange EB and WB I-4 - Utility Coordination

**[EXTERNAL EMAIL. EXERCISE CAUTION.]**

**This contact is being done completely electronically, but if you need anything in a hard copy format, please let me know.**

**County:** Volusia  
**Location:** Port Orange EB and WB I-4  
**Phase Submittal:** Preliminary Submittal  
**Description:** Truck Parking Volusia County Site 1A

All,

This email serves as a follow up reminder that marked plans for the above referenced project are to be returned to my office **ASAP**. Please indicate any easements / compensable interests on your marked plans.

Please remember that this is a PD&E study, and there is no final design at this time. All SUE data will be completed as part of the final design.

Thank you,

**Kate Guevara, PE**  
PROJECT ENGINEER

---

**INWOOD CONSULTING ENGINEERS**  
3000 Dovera Dr., Suite 200, Oviedo, FL 32765  
P: 407-971-8850  
[inwoodinc.com](http://inwoodinc.com)

---

**From:** Kate Guevara  
**Sent:** Monday, April 3, 2023 5:14 PM  
**To:** Melonie Schwartz <[mschwartz@inwoodinc.com](mailto:mschwartz@inwoodinc.com)>; [ks2488@att.com](mailto:ks2488@att.com); [PeKalaJames@codb.us](mailto:PeKalaJames@codb.us); [NelsonJames@CODB.US](mailto:NelsonJames@CODB.US)  
**Subject:** RE: Truck Parking Site - Port Orange EB I-4 - Utility Coordination

**This contact is being done completely electronically, but if you need anything in a hard copy format, please let me know.**

**County:** Volusia  
**Location:** Port Orange EB I-4  
**Phase Submittal:** Preliminary Submittal  
**Description:** Truck Parking Volusia County Site 1A

All,

This email serves as a follow up reminder that marked plans for the above referenced project are to be returned to my office no later than **April 5, 2023**. Please indicate any easements / compensable interests on your marked plans.

Please remember that this is a PD&E study, and there is no final design at this time. All SUE data will be completed as part of the final design.

Thank you,

**Kate Guevara, PE**

PROJECT ENGINEER

---

**INWOOD CONSULTING ENGINEERS**

3000 Dovera Dr., Suite 200, Oviedo, FL 32765

P: 407-971-8850

[inwoodinc.com](http://inwoodinc.com)

---

**From:** Kate Guevara

**Sent:** Thursday, March 16, 2023 11:04 AM

**To:** Melonie Schwartz <[mschwartz@inwoodinc.com](mailto:mschwartz@inwoodinc.com)>; [ks2488@att.com](mailto:ks2488@att.com); [PeKalaJames@codb.us](mailto:PeKalaJames@codb.us); [NelsonJames@CODB.US](mailto:NelsonJames@CODB.US); [jureed@port-orange.org](mailto:jureed@port-orange.org); [Christopher.buonanni@fpl.com](mailto:Christopher.buonanni@fpl.com); Colucci, Thomas <[thomas.colucci@fpl.com](mailto:thomas.colucci@fpl.com)>; [Igor.Didkovsky@fpl.com](mailto:Igor.Didkovsky@fpl.com); [Martin.Mikhail@fpl.com](mailto:Martin.Mikhail@fpl.com)

**Subject:** RE: Truck Parking Site - Port Orange EB I-4 - Utility Coordination

**This contact is being done completely electronically, but if you need anything in a hard copy format, please let me know.**

<b>County:</b>	<b>Volusia</b>
<b>Location:</b>	<b>Port Orange EB I-4</b>
<b>Phase Submittal:</b>	<b>Preliminary Submittal</b>
<b>Description:</b>	<b>Truck Parking Volusia County Site 1A</b>

All,

This email serves as a follow up reminder that marked plans for the above referenced project are to be returned to my office no later than **April 5, 2023**. Please indicate any easements / compensable interests on your marked plans.

Please remember that this is a PD&E study, and there is no final design at this time. All SUE data will be completed as part of the final design.

Thank you,

**Kate Guevara, PE**

PROJECT ENGINEER

---

**INWOOD CONSULTING ENGINEERS**

3000 Dovera Dr., Suite 200, Oviedo, FL 32765

P: 407-971-8850

[inwoodinc.com](http://inwoodinc.com)

---

**From:** Melonie Schwartz <[mschwartz@inwoodinc.com](mailto:mschwartz@inwoodinc.com)>

**Sent:** Thursday, March 9, 2023 1:34 AM

**Cc:** David Ledgerwood <[dledgerwood@inwoodinc.com](mailto:dledgerwood@inwoodinc.com)>; Kate Guevara <[kguevara@inwoodinc.com](mailto:kguevara@inwoodinc.com)>

**Subject:** Truck Parking Site - Port Orange EB I-4 - Utility Coordination

**Importance:** High

**This contact is being done completely electronically, but if you need anything in a hard copy format, please let me know.**

**County:** Volusia  
**Location:** Port Orange EB I-4  
**Phase Submittal:** Preliminary Submittal  
**Description:** Truck Parking Volusia County Site 1A

Inwood Consulting Engineers has been selected to represent FDOT District 5 in utility coordination between DOT District 5 and your agency on the above referenced project. Please address all correspondence, verbal and written to Inwood. Further correspondence with FDOT District 5 could delay a timely response. We are looking forward to working with you in this endeavor.

FDOT District 5 proposes a designated truck parking site at the above designated location, as shown by the site descriptions attached. Facilities owned by you may require relocation and/or adjustment, as necessitated by the FDOT District 5 construction.

If you have facilities within the project limits, please markup the site description (**color code – green**) to indicate your facility locations, which shall include verification and plotting the exact location of your existing facilities including both horizontal and vertical information, the approximate boundaries of easements, fee title, or other property interests you may own between the existing right of way line and the outside limits as indicated on the plans. The marked plans are to be returned to my office no later than **April 5, 2023**. Please let us know if there is anything we can do to assist with the completion of the green line mark-ups.

Thank you in advance for your cooperation. If you have any questions concerning this matter, Melonie Schwartz can be reached at 407-971-8850 or by email at [mschwartz@inwoodinc.com](mailto:mschwartz@inwoodinc.com) or Kate Guevara can be reached at 407-971-8850 or by email at [kguevara@inwoodinc.com](mailto:kguevara@inwoodinc.com).

Sincerely,

**Melonie Schwartz**

UTILITY COORDINATION MANAGER

---

**INWOOD CONSULTING ENGINEERS**

3000 Dovera Dr., Suite 200, Oviedo, FL 32765

C: 407-242-4981

P: 407-971-8850

[inwoodinc.com](http://inwoodinc.com)

[mschwartz@inwoodinc.com](mailto:mschwartz@inwoodinc.com)

---

Under Florida law, e-mail addresses are public records. If you do not want your e-mail address released in response to a public-records request, do not send electronic mail to this entity. Instead, contact this office by phone or in writing.



## Kate Guevara

---

**From:** Melonie Schwartz  
**Sent:** Thursday, March 9, 2023 12:46 PM  
**To:** Kate Guevara  
**Subject:** FW: Truck Parking Site - Port Orange EB I-4 - Utility Coordination

Sincerely,

**Melonie Schwartz**

UTILITY COORDINATION MANAGER

---

**INWOOD CONSULTING ENGINEERS**

3000 Dovera Dr., Suite 200, Oviedo, FL 32765

C: 407-242-4981

P: 407-971-8850

[inwoodinc.com](http://inwoodinc.com)

[mschwartz@inwoodinc.com](mailto:mschwartz@inwoodinc.com)

---

**From:** Greer, Darren <[greerdarwin@CODB.US](mailto:greerdarwin@CODB.US)>  
**Sent:** Thursday, March 9, 2023 12:31 PM  
**To:** Melonie Schwartz <[mschwartz@inwoodinc.com](mailto:mschwartz@inwoodinc.com)>  
**Subject:** RE: Truck Parking Site - Port Orange EB I-4 - Utility Coordination

Melonie,

The City of Daytona Beach ITS / Traffic Engineering does not have and facilities at either site 1A or 1B

Thanks,

*Darren Greer*

*Traffic Division Administrator*

*City of Daytona Beach*

*O (386) 671-8653*

*C (386) 235-4977*

*[greerd@codb.us](mailto:greerd@codb.us)*

---

**From:** Melonie Schwartz <[mschwartz@inwoodinc.com](mailto:mschwartz@inwoodinc.com)>  
**Sent:** Thursday, March 9, 2023 1:34 AM  
**To:** SPENCER, KIRBY <[ks2488@att.com](mailto:ks2488@att.com)>; PeKala, James <[PeKalaJames@CODB.US](mailto:PeKalaJames@CODB.US)>; Nelson, James <[NelsonJames@CODB.US](mailto:NelsonJames@CODB.US)>; Greer, Darren <[greerdarwin@CODB.US](mailto:greerdarwin@CODB.US)>; [jureed@port-orange.org](mailto:jureed@port-orange.org); [Christopher.buonanni@fpl.com](mailto:Christopher.buonanni@fpl.com); Colucci, Thomas <[thomas.colucci@fpl.com](mailto:thomas.colucci@fpl.com)>; [Igor.Didkovsky@fpl.com](mailto:Igor.Didkovsky@fpl.com); [Martin.Mikhail@fpl.com](mailto:Martin.Mikhail@fpl.com)  
**Cc:** David Ledgerwood <[dledgerwood@inwoodinc.com](mailto:dledgerwood@inwoodinc.com)>; Kate Guevara <[kguevara@inwoodinc.com](mailto:kguevara@inwoodinc.com)>

**Subject:** Truck Parking Site - Port Orange EB I-4 - Utility Coordination

**Importance:** High

[EXTERNAL EMAIL. EXERCISE CAUTION.]

**This contact is being done completely electronically, but if you need anything in a hard copy format, please let me know.**

<b>County:</b>	<b>Volusia</b>
<b>Location:</b>	<b>Port Orange EB I-4</b>
<b>Phase Submittal:</b>	<b>Preliminary Submittal</b>
<b>Description:</b>	<b>Truck Parking Volusia County Site 1A</b>

Inwood Consulting Engineers has been selected to represent FDOT District 5 in utility coordination between DOT District 5 and your agency on the above referenced project. Please address all correspondence, verbal and written to Inwood. Further correspondence with FDOT District 5 could delay a timely response. We are looking forward to working with you in this endeavor.

FDOT District 5 proposes a designated truck parking site at the above designated location, as shown by the site descriptions attached. Facilities owned by you may require relocation and/or adjustment, as necessitated by the FDOT District 5 construction.

If you have facilities within the project limits, please markup the site description (**color code – green**) to indicate your facility locations, which shall include verification and plotting the exact location of your existing facilities including both horizontal and vertical information, the approximate boundaries of easements, fee title, or other property interests you may own between the existing right of way line and the outside limits as indicated on the plans. The marked plans are to be returned to my office no later than **April 5, 2023**. Please let us know if there is anything we can do to assist with the completion of the green line mark-ups.

Thank you in advance for your cooperation. If you have any questions concerning this matter, Melonie Schwartz can be reached at 407-971-8850 or by email at [mschwartz@inwoodinc.com](mailto:mschwartz@inwoodinc.com) or Kate Guevara can be reached at 407-971-8850 or by email at [kguevara@inwoodinc.com](mailto:kguevara@inwoodinc.com).

Sincerely,

**Melonie Schwartz**

UTILITY COORDINATION MANAGER

---

**INWOOD CONSULTING ENGINEERS**

3000 Dovera Dr., Suite 200, Oviedo, FL 32765

C: 407-242-4981

P: 407-971-8850

[inwoodinc.com](http://inwoodinc.com)

[mschwartz@inwoodinc.com](mailto:mschwartz@inwoodinc.com)

---

Under Florida law, e-mail addresses are public records. If you do not want your e-mail address released in response to a public-records request, do not send electronic mail to this entity. Instead, contact this office by phone or in writing.

## **City of Port Orange Florida**

## Kate Guevara

---

**From:** Reed, Junos <jureed@port-orange.org>  
**Sent:** Thursday, March 16, 2023 4:22 PM  
**To:** Kate Guevara  
**Subject:** RE: [EXT] RE: Truck Parking Site - Port Orange WB I-4 - Utility Coordination

The city of Port Orange does not have any facilities located within the project limits.

Regards,  
**Junos Reed, P.E.**  
Engineering & Construction Manager  
City of Port Orange Public Works & Utilities  
386-506-5754 office  
386-212-4533 cell



---

**From:** Kate Guevara <kguevara@inwoodinc.com>  
**Sent:** Thursday, March 16, 2023 11:05 AM  
**To:** Melonie Schwartz <mschwartz@inwoodinc.com>; ks2488@att.com; PeKalaJames@codb.us; NelsonJames@CODB.US; Reed, Junos <jureed@port-orange.org>; Christopher.buonanni@fpl.com; Colucci, Thomas <thomas.colucci@fpl.com>; Igor.Didkovsky@fpl.com; Martin.Mikhail@fpl.com  
**Subject:** [EXT] RE: Truck Parking Site - Port Orange WB I-4 - Utility Coordination

**This contact is being done completely electronically, but if you need anything in a hard copy format, please let me know.**

<b>County:</b>	<b>Volusia</b>
<b>Location:</b>	<b>Port Orange WB I-4</b>
<b>Phase Submittal:</b>	<b>Preliminary Submittal</b>
<b>Description:</b>	<b>Truck Parking Volusia County Site 1B</b>

All,

This email serves as a follow up reminder that marked plans for the above referenced project are to be returned to my office no later than **April 5, 2023**. Please indicate any easements / compensable interests on your marked plans.

Please remember that this is a PD&E study, and there is no final design at this time. All SUE data will be completed as part of the final design.

Thank you,

**Kate Guevara, PE**  
PROJECT ENGINEER

---

**INWOOD CONSULTING ENGINEERS**

3000 Dovera Dr., Suite 200, Oviedo, FL 32765

P: 407-971-8850

[inwoodinc.com](http://inwoodinc.com)

---

**From:** Melonie Schwartz <[mschwartz@inwoodinc.com](mailto:mschwartz@inwoodinc.com)>

**Sent:** Thursday, March 9, 2023 1:34 AM

**To:** [ks2488@att.com](mailto:ks2488@att.com); [PeKalaJames@codb.us](mailto:PeKalaJames@codb.us); [NelsonJames@CODB.US](mailto:NelsonJames@CODB.US); [greerd@codb.us](mailto:greerd@codb.us); [jureed@port-orange.org](mailto:jureed@port-orange.org); [Christopher.buonanni@fpl.com](mailto:Christopher.buonanni@fpl.com); Colucci, Thomas <[thomas.colucci@fpl.com](mailto:thomas.colucci@fpl.com)>; [Igor.Didkovsky@fpl.com](mailto:Igor.Didkovsky@fpl.com); [Martin.Mikhail@fpl.com](mailto:Martin.Mikhail@fpl.com)

**Cc:** David Ledgerwood <[dledgerwood@inwoodinc.com](mailto:dledgerwood@inwoodinc.com)>; Kate Guevara <[kguevara@inwoodinc.com](mailto:kguevara@inwoodinc.com)>

**Subject:** Truck Parking Site - Port Orange WB I-4 - Utility Coordination

**Importance:** High

This contact is being done completely electronically, but if you need anything in a hard copy format, please let me know.

<b>County:</b>	<b>Volusia</b>
<b>Location:</b>	<b>Port Orange WB I-4</b>
<b>Phase Submittal:</b>	<b>Preliminary Submittal</b>
<b>Description:</b>	<b>Truck Parking Volusia County Site 1B</b>

Inwood Consulting Engineers has been selected to represent FDOT District 5 in utility coordination between DOT District 5 and your agency on the above referenced project. Please address all correspondence, verbal and written to Inwood. Further correspondence with FDOT District 5 could delay a timely response. We are looking forward to working with you in this endeavor.

FDOT District 5 proposes a designated truck parking site at the above designated location, as shown by the site descriptions attached. Facilities owned by you may require relocation and/or adjustment, as necessitated by the FDOT District 5 construction.

If you have facilities within the project limits, please markup the site description (**color code – green**) to indicate your facility locations, which shall include verification and plotting the exact location of your existing facilities including both horizontal and vertical information, the approximate boundaries of easements, fee title, or other property interests you may own between the existing right of way line and the outside limits as indicated on the plans. The marked plans are to be returned to my office no later than **April 5, 2023**. Please let us know if there is anything we can do to assist with the completion of the green line mark-ups.

Thank you in advance for your cooperation. If you have any questions concerning this matter, Melonie Schwartz can be reached at 407-971-8850 or by email at [mschwartz@inwoodinc.com](mailto:mschwartz@inwoodinc.com) or Kate Guevara can be reached at 407-971-8850 or by email at [kguevara@inwoodinc.com](mailto:kguevara@inwoodinc.com).

Sincerely,

**Melonie Schwartz**

UTILITY COORDINATION MANAGER

---

**INWOOD CONSULTING ENGINEERS**

3000 Dovera Dr., Suite 200, Oviedo, FL 32765

C: 407-242-4981

P: 407-971-8850

[inwoodinc.com](http://inwoodinc.com)

## **Florida Power and Light Distribution**

## Kate Guevara


---

**From:** Buonanni, Christopher <Christopher.Buonanni@fpl.com>  
**Sent:** Friday, March 17, 2023 8:59 AM  
**To:** Kate Guevara  
**Subject:** RE: Truck Parking Site - Port Orange WB I-4 - Utility Coordination

We have no facilities on the North side of I-4 along that stretch of road. If they need power that would reach out to me for coordination.



Chris Buonanni  
Engineer I  
Relocation Coordinator CF  
Sanford Service Center - FPL  
Office: 407-328-1911  
Email: [Christopher.Buonanni@fpl.com](mailto:Christopher.Buonanni@fpl.com)

 Please contact me with any questions or concerns. If you cannot reach me, feel free to contact my Engineering Leader Josh Zehnder at (o) 386-586-6436, (c) 386-793-5832 or [Joshua.Zehnder@fpl.com](mailto:Joshua.Zehnder@fpl.com)

Visit the new [FPL Project Portal](https://www.fpl.com/construction) at [FPL.com/construction](https://www.fpl.com/construction) to manage your FPL residential and commercial construction projects including milestones.

---

**From:** Kate Guevara <[kguevara@inwoodinc.com](mailto:kguevara@inwoodinc.com)>  
**Sent:** Thursday, March 16, 2023 11:05 AM



**To:** Melonie Schwartz <[mschwartz@inwoodinc.com](mailto:mschwartz@inwoodinc.com)>; [ks2488@att.com](mailto:ks2488@att.com); [PeKalaJames@codb.us](mailto:PeKalaJames@codb.us); [NelsonJames@CODB.US](mailto:NelsonJames@CODB.US); [jureed@port-orange.org](mailto:jureed@port-orange.org); Buonanni, Christopher <[Christopher.Buonanni@fpl.com](mailto:Christopher.Buonanni@fpl.com)>; Colucci, Thomas <[Thomas.Colucci@fpl.com](mailto:Thomas.Colucci@fpl.com)>; Didkovsky, Igor <[Igor.Didkovsky@fpl.com](mailto:Igor.Didkovsky@fpl.com)>; Mikhail, Martin <[Martin.Mikhail@fpl.com](mailto:Martin.Mikhail@fpl.com)>  
**Subject:** RE: Truck Parking Site - Port Orange WB I-4 - Utility Coordination

**This contact is being done completely electronically, but if you need anything in a hard copy format, please let me know.**

<b>County:</b>	<b>Volusia</b>
<b>Location:</b>	<b>Port Orange WB I-4</b>
<b>Phase Submittal:</b>	<b>Preliminary Submittal</b>
<b>Description:</b>	<b>Truck Parking Volusia County Site 1B</b>

All,

This email serves as a follow up reminder that marked plans for the above referenced project are to be returned to my office no later than **April 5, 2023**. Please indicate any easements / compensable interests on your marked plans.

Please remember that this is a PD&E study, and there is no final design at this time. All SUE data will be completed as part of the final design.

Thank you,

**Kate Guevara, PE**  
PROJECT ENGINEER

---

**INWOOD CONSULTING ENGINEERS**  
3000 Dovera Dr., Suite 200, Oviedo, FL 32765  
P: 407-971-8850  
[inwoodinc.com](http://inwoodinc.com)

---

**From:** Melonie Schwartz <[mschwartz@inwoodinc.com](mailto:mschwartz@inwoodinc.com)>  
**Sent:** Thursday, March 9, 2023 1:34 AM  
**To:** [ks2488@att.com](mailto:ks2488@att.com); [PeKalaJames@codb.us](mailto:PeKalaJames@codb.us); [NelsonJames@CODB.US](mailto:NelsonJames@CODB.US); [greerd@codb.us](mailto:greerd@codb.us); [jureed@port-orange.org](mailto:jureed@port-orange.org); [Christopher.buonanni@fpl.com](mailto:Christopher.buonanni@fpl.com); Colucci, Thomas <[thomas.colucci@fpl.com](mailto:thomas.colucci@fpl.com)>; [Igor.Didkovsky@fpl.com](mailto:Igor.Didkovsky@fpl.com); [Martin.Mikhail@fpl.com](mailto:Martin.Mikhail@fpl.com)  
**Cc:** David Ledgerwood <[dledgerwood@inwoodinc.com](mailto:dledgerwood@inwoodinc.com)>; Kate Guevara <[kguevara@inwoodinc.com](mailto:kguevara@inwoodinc.com)>  
**Subject:** Truck Parking Site - Port Orange WB I-4 - Utility Coordination  
**Importance:** High

**This contact is being done completely electronically, but if you need anything in a hard copy format, please let me know.**

<b>County:</b>	<b>Volusia</b>
<b>Location:</b>	<b>Port Orange WB I-4</b>
<b>Phase Submittal:</b>	<b>Preliminary Submittal</b>
<b>Description:</b>	<b>Truck Parking Volusia County Site 1B</b>



Inwood Consulting Engineers has been selected to represent FDOT District 5 in utility coordination between DOT District 5 and your agency on the above referenced project. Please address all correspondence, verbal and written to Inwood. Further correspondence with FDOT District 5 could delay a timely response. We are looking forward to working with you in this endeavor.

FDOT District 5 proposes a designated truck parking site at the above designated location, as shown by the site descriptions attached. Facilities owned by you may require relocation and/or adjustment, as necessitated by the FDOT District 5 construction.

If you have facilities within the project limits, please markup the site description (**color code – green**) to indicate your facility locations, which shall include verification and plotting the exact location of your existing facilities including both horizontal and vertical information, the approximate boundaries of easements, fee title, or other property interests you may own between the existing right of way line and the outside limits as indicated on the plans. The marked plans are to be returned to my office no later than **April 5, 2023**. Please let us know if there is anything we can do to assist with the completion of the green line mark-ups.

Thank you in advance for your cooperation. If you have any questions concerning this matter, Melonie Schwartz can be reached at 407-971-8850 or by email at [mschwartz@inwoodinc.com](mailto:mschwartz@inwoodinc.com) or Kate Guevara can be reached at 407-971-8850 or by email at [kguevara@inwoodinc.com](mailto:kguevara@inwoodinc.com).

Sincerely,

**Melonie Schwartz**

UTILITY COORDINATION MANAGER

---

**INWOOD CONSULTING ENGINEERS**

3000 Dovera Dr., Suite 200, Oviedo, FL 32765

C: 407-242-4981

P: 407-971-8850

[inwoodinc.com](http://inwoodinc.com)

[mschwartz@inwoodinc.com](mailto:mschwartz@inwoodinc.com)

## **Florida Power and Light Transmission**

## Kate Guevara

---

**From:** Colucci, Thomas <Thomas.Colucci@fpl.com>  
**Sent:** Tuesday, March 28, 2023 2:28 PM  
**To:** Kate Guevara; Melonie Schwartz; ks2488@att.com; PeKalaJames@codb.us; NelsonJames@CODB.US; jureed@port-orange.org  
**Subject:** RE: Truck Parking Site - Port Orange EB I-4 - Utility Coordination  
**Attachments:** RE: Truck Parking Site - Port Orange EB I-4 - Utility Coordination; RE: Truck Parking Site - Port Orange WB I-4 - Utility Coordination

Kate, Melonie,

Florida Power and Light – Transmission - has No Facilities at these locations.

Best Regards,

Thomas Colucci  
Transmission Relocation Coordinator  
Working on behalf of Florida Power and Light  
Transmission Relocation Coordination in FDOT Districts 2, 3, 4, 5 and Palm Beach County

Cell: 315-219-7458  
Thomas.Colucci@FPL.com

---

**From:** Kate Guevara <kguevara@inwoodinc.com>  
**Sent:** Thursday, March 16, 2023 11:04 AM  
**To:** Melonie Schwartz <mschwartz@inwoodinc.com>; ks2488@att.com; PeKalaJames@codb.us; NelsonJames@CODB.US; jureed@port-orange.org; Buonanni, Christopher <Christopher.Buonanni@fpl.com>; Colucci, Thomas <Thomas.Colucci@fpl.com>; Didkovsky, Igor <Igor.Didkovsky@fpl.com>; Mikhail, Martin <Martin.Mikhail@fpl.com>  
**Subject:** RE: Truck Parking Site - Port Orange EB I-4 - Utility Coordination

**This contact is being done completely electronically, but if you need anything in a hard copy format, please let me know.**

<b>County:</b>	<b>Volusia</b>
<b>Location:</b>	<b>Port Orange EB I-4</b>
<b>Phase Submittal:</b>	<b>Preliminary Submittal</b>
<b>Description:</b>	<b>Truck Parking Volusia County Site 1A</b>

All,

This email serves as a follow up reminder that marked plans for the above referenced project are to be returned to my office no later than **April 5, 2023**. Please indicate any easements / compensable interests on your marked plans.

Please remember that this is a PD&E study, and there is no final design at this time. All SUE data will be completed as part of the final design.

Thank you,

**Kate Guevara, PE**

PROJECT ENGINEER

---

**INWOOD CONSULTING ENGINEERS**

3000 Dovera Dr., Suite 200, Oviedo, FL 32765

P: 407-971-8850

[inwoodinc.com](http://inwoodinc.com)

---

**From:** Melonie Schwartz <[mschwartz@inwoodinc.com](mailto:mschwartz@inwoodinc.com)>

**Sent:** Thursday, March 9, 2023 1:34 AM

**Cc:** David Ledgerwood <[dledgerwood@inwoodinc.com](mailto:dledgerwood@inwoodinc.com)>; Kate Guevara <[kguevara@inwoodinc.com](mailto:kguevara@inwoodinc.com)>

**Subject:** Truck Parking Site - Port Orange EB I-4 - Utility Coordination

**Importance:** High

**This contact is being done completely electronically, but if you need anything in a hard copy format, please let me know.**

<b>County:</b>	<b>Volusia</b>
<b>Location:</b>	<b>Port Orange EB I-4</b>
<b>Phase Submittal:</b>	<b>Preliminary Submittal</b>
<b>Description:</b>	<b>Truck Parking Volusia County Site 1A</b>

Inwood Consulting Engineers has been selected to represent FDOT District 5 in utility coordination between DOT District 5 and your agency on the above referenced project. Please address all correspondence, verbal and written to Inwood. Further correspondence with FDOT District 5 could delay a timely response. We are looking forward to working with you in this endeavor.

FDOT District 5 proposes a designated truck parking site at the above designated location, as shown by the site descriptions attached. Facilities owned by you may require relocation and/or adjustment, as necessitated by the FDOT District 5 construction.

If you have facilities within the project limits, please markup the site description (**color code – green**) to indicate your facility locations, which shall include verification and plotting the exact location of your existing facilities including both horizontal and vertical information, the approximate boundaries of easements, fee title, or other property interests you may own between the existing right of way line and the outside limits as indicated on the plans. The marked plans are to be returned to my office no later than **April 5, 2023**. Please let us know if there is anything we can do to assist with the completion of the green line mark-ups.

Thank you in advance for your cooperation. If you have any questions concerning this matter, Melonie Schwartz can be reached at 407-971-8850 or by email at [mschwartz@inwoodinc.com](mailto:mschwartz@inwoodinc.com) or Kate Guevara can be reached at 407-971-8850 or by email at [kguevara@inwoodinc.com](mailto:kguevara@inwoodinc.com).

Sincerely,

**Melonie Schwartz**

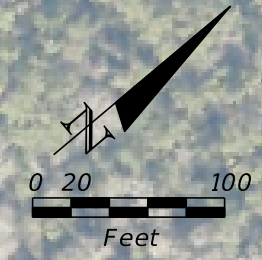
UTILITY COORDINATION MANAGER

---

**INWOOD CONSULTING ENGINEERS**

**Appendix 3**  
**PD&E Project Recommended Preferred Alternative**  
**Concept Plans**





**LEGEND**

- PROPOSED R/W
- PARCEL LINE
- WETLANDS
- PROPOSED POND
- PROPOSED FENCE
- TRUCK PARKING SPACES = 253
- MAINTENANCE VEHICLE PARKING SPACES = 10
- TOTAL POND AREA = 10.17 ACRES
- R/W REQUIRED = 116.827 ACRES

