

**452638-1: SR 527 Resurfacing from north of Rollins St to Clay Ave**

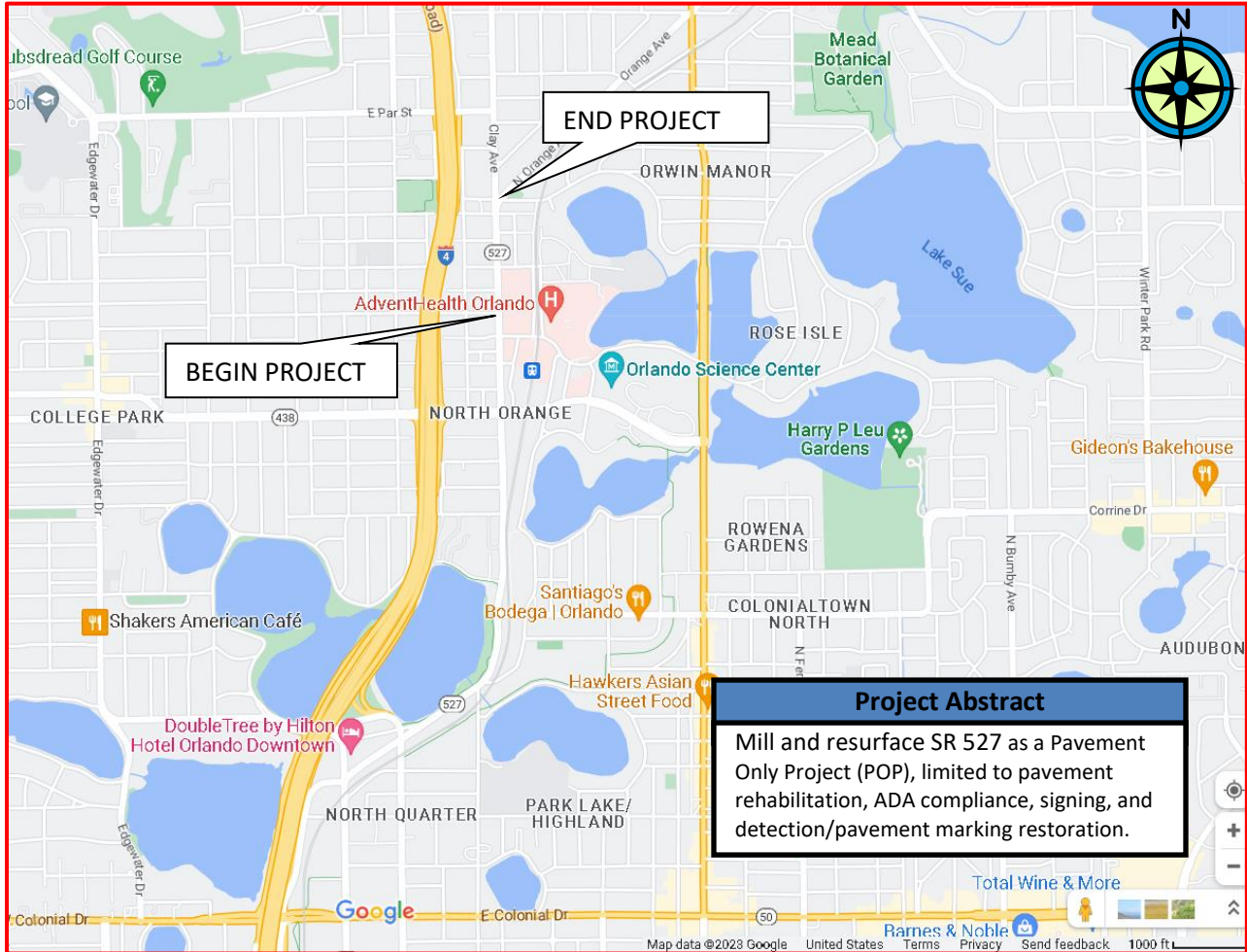
State Road Number: 527  
 Section Number: 75040-000  
 County: Orange  
 Project Limits: From North of Rollins Street to Clay Avenue  
 Begin MP/End MP: 16.423 to 16.735 (0.312 MI)  
 FM: 452638-1

1. Existing R/W Map Project Numbers:	431184-1 (2013); MP 16.312 to MP 16.449, 35-ft RT, 25-ft LT			
2. Old Construction Project Numbers:	422004-1 (2009); MP 14.788 to MP 17.367, Mill & Resurface 75040-3531 (1988); MP 15.751 to MP 18.103, Mill & Resurface 75000-3705 (1971); MP 16.687, Signal			
3. Additional R/W required?	No.			
4. Level of Community Awareness Plan:	CAP Level 2.			
5. Agreements required?	<input type="checkbox"/> No		<input checked="" type="checkbox"/> Yes	
	<input type="checkbox"/> Yes, including Local Funds.			
6. Are there any bridges within the limits?	No.			
7. Are there any RR Crossings within the project limits or in the vicinity?	CFRC is parallel to SR 527 but does not cross within the project limits.			
8. Are there any Airports within 10 nautical miles?	Yes.			
9. Storm Water Management jurisdiction:	SJRWMD.			
10. Is the Project within the CCCL ( <i>Coastal Construction Control Line</i> )?	No.			
11. Existing Utilities per Sunshine One Call: (per SS1C, as-builts, and field markers)	AT&T Corp/PEA AT&T Florida Bright House Networks LLC dba Charter/Spectrum CenturyLink/Lumen City of Orlando – Electric/Fiber/Reclaim/Sewer ( <i>Extraordinary Circumstances noted</i> ) City of Winter Park – Electric/Sewer/Water Orlando Utilities Commission (OUC) – Electric/Water TECO Peoples Gas Uniti Fiber Verizon Business/MCI			
12. Any special MOT concerns?	Adjacent AdventHealth campus and parallel CFRC tracks.			
13. Any construction concerns?	Vibratory restrictions and existing structures monitoring anticipated.			
14. Posted/Design Speed Limits (mph):	Location (MP)	Design Speed	Posted Speed	Target Speed
	16.423 to 16.735	35	30	30
15. Design Criteria and Context Classification:	SHS, FDM (2023), RRR			
	Facility		Context Classification	
	SR 527		C5 “Urban Center”	
16. Lump Sum or Pay Item?	Pay Item.			
17. Proposed Design Schedule:	18-24 Months.			

**Agreements Required:**

The Engineer shall coordinate to obtain an agreement with the City of Orlando and/or Orange County for maintenance related to proposed improvements, including the removal or adjustment of pedestrian pavers to accommodate curb ramp reconstruction to satisfy ADA requirements.

Project Location Map: [\(Google Maps Link\)](#)



The District has determined that this project is to be programmed as a “Pavement Only Project” (POP) and therefore additional roadway and roadside evaluation, analysis, improvements, etc. are not to be included.

The Engineer is responsible for verifying all items in the proposed scope and shall review the project for conformance with all applicable criteria and standards within the context of a POP.

**Intent and Nature of Project:**

The purpose of the project is to restore the functional condition of the asphalt pavement to extend the service life of the existing roadway in accordance with FDOT Design Manual Section 114.1.4 as a POP. The nature of the project is limited to asphalt resurfacing, ADA compliance, detection restoration, and signing and pavement markings. The project is based on a request from the FDOT District 5 Pavement Management/Maintenance Office for a review of Roadway 75040-000 from MP 16.625 to MP 17.387. The being project limit has been adjusted from MP 16.625 to MP 16.423 to match the end project of FPID: 445220-1. The end project limit has been adjusted from MP 17.387 to MP 16.735 to match the begin project limit of FPID: 445691-1.

- The Concept and Scope are provided to convey the general overall intent of the project and to establish the estimated cost for programming. These documents are not intended to serve as detailed design level directives but are to communicate the projects primary objectives as approved by District staff. The Engineer is responsible for developing the final design within the constraints of the project budget while meeting the project’s needs.

**Project Description:**

- Project is north of the downtown core of the City of Orlando.
- SR 527 is classified as an urban principal arterial with Access Classification 07.

## Candidate POP Project Technical Scope

- The following projects have been identified within the vicinity of this project. The FDOT PM is to confirm status, proposed improvements, and project limits prior to advertisement.
  - FPID: 445220-1 SR 527 RRR project from Magnolia Avenue to Rollins Street anticipated to be let to construction in July 2024. The FDOT PM is Tyler Burgett.
  - FPID: 445691-1 SR 527 Safety Project from Clay Avenue to South Orlando Avenue which includes lane reduction and bicycle lanes was let to construction in October 2023. The FDOT Design PM is Joseph Fontanelli.
  - FPID: 445691-2 SR 527 Roundabout at the Clay Avenue intersection currently in design. The project is not funded for Right of Way or construction. The FDOT PM is Joseph Fontanelli.
  - FPID: 445692-1 SR 527 at SR 438 (Princeton St) intersection improvement project is currently under construction and anticipated to be completed in Fall 2024. The FDOT Design PM is Jude Jean-Francois.

### Typical Sections:

- Per as-built plans, the project includes 2 typical sections.
  - MP 16.423 to 16.625; 4-lane divided curb and gutter section with two 11-ft lanes and variable width sidewalk (5-ft to 10-ft) per direction separated by a 12-ft two-way left turn lane.
  - MP 16.625 to 16.735; 4-lane undivided curb and gutter section with two 10-ft lanes and variable width sidewalk (5-ft to 10-ft) per direction.
- Per 2022 traffic data: 18,600 AADT, T = 8% (755039).

### Roadway Scope Items:

- A Pavement Condition Assessment will be requested and completed by FDOT. Existing pavement was observed to generally be in fair condition. 1 pavement design has been assumed for estimating purposes: 1) milling and resurfacing all pavement surfaces.
  - Vibratory rolling restrictions may be warranted due to proximity to adjacent medical facilities.
  - Existing pedestrian paver crosswalks and concrete header curbs are to remain.
- MPSV data will be requested; however, cross slope and superelevation correction are not to be included as components of this project.
- The type F curb gutter pan has been overlaid with asphalt. Provide provisions to avoid curb damage during milling and resurfacing operations. Gutter pan is included in lane widths described in the typical section.

### Drainage Scope Items:

- The existing drainage structures and systems are to be maintained. No work.

### Utility Scope Items:

- Adjust all valve covers, utility pull boxes, fire hydrants, and utility manholes to be flush with proposed sidewalk, ramps, roadside, and roadway pavement as necessary to complete the proposed improvements.
  - Manhole noted to be overlaid with asphalt.
- The Engineer is to confirm that utility poles are shown in the plans.
- Quality Level C "QL C" utility information is anticipated.

### Multimodal Scope Items:

- The Engineer shall include a project-specific pedestrian/bicyclist temporary traffic control plan.

#### Transit:

- LYNX route 102 services the corridor. Coordinate temporary construction relocations and other transit issues.

#### Bicycles:

- There are no designated bicycle facilities within the project limits.
  - There is insufficient existing available pavement to accommodate bicycle lanes within the existing typical section. Per coordination with the District Bike/Ped Coordinator during ERC, sharrows are

## Candidate POP Project Technical Scope

not to be provided. 5-ft bicycle lanes are proposed to the north under FPID: 445691-1. No bicycle lanes or accommodations are proposed to the south under FPID: 445220-1.

### Pedestrians:

- There is complete sidewalk coverage; however, some sidewalk is outside the apparent FDOT Right of Way and within City Services Easements.
  - Reconstruct existing curb ramps that do not comply with minimum ADA criteria and ensure all ramps have detectable warning surfaces (DWS). Note that sidewalk is a mix of patterned concrete, pedestrian pavers, and standard concrete.

### **Permitting Scope Items:**

- Coordinate with FDOT, submitting a permit determination letter to the Environmental Permits Office, Attention District Five Permits Coordinator, for review and concurrence during the design process, considering the below descriptions of work and conditions.
  - This project is not anticipated to exceed one acre of soil disturbing activities and will not require NPDES coverage under the FDEP Generic Permit for Stormwater Discharge from Large and Small Construction Activities.

### **Environmental Scope Items:**

- Complete an environmental assessment:
  - A protected species assessment is required for the project. The level of assessment should be commensurate with the scope of work. The assessment should focus on species applicable to the project area with consideration given to consultation areas, habitats, and known occurrence data.
  - A contamination assessment is not anticipated for the project.
- A Cultural Resources Assessment is required and is to be conducted by Cultural Resources Professionals as outlined in 36 CFR Part 61 and set forth in the Professional Qualifications Standards section of the Secretary of the Interior's Standard and Guidelines for Archaeology and Historic Preservation.
  - Orwin Manor Park is an identified 4(f) resource. If Federal funds are involved and there is any impact to this facility, then some level of 4(f) evaluation will be needed.

### **Structural Scope Items:**

- Sensitive business operations are in proximity to anticipated construction activities and are to be reviewed for vibration monitoring requirements per FDM 117 and FDOT Specification 108.

### **Traffic Operations (Includes Signing, Signals, ITS) Scope Items:**

#### Signing and Pavement Markings

- Signing and pavement markings shall be completed for the project limits. Inventory all signing including evaluation for compliance with all applicable criteria and coordinate with the District Design Office for any changes to existing signing. Any existing signs that conflict with the proposed signs or pavement markings, and non-compliant signs or pavement markings, are to be addressed in the plans.
  - Restore posted speed limit pavement messages.
  - The City of Orlando has requested high emphasis pedestrian markings.
  - Improve notification of the northbound lane drop and southbound lane addition at Hazel Street/Clay Avenue where there is a concentration of crashes.

#### Signals

- The City of Orlando has requested LPI's which are to be implemented if the existing equipment can accommodate the change. No new cabinet, controller, etc. is permitted.
- The project includes 3 signalized intersections. Restore vehicle detection in-kind if disturbed by milling and resurfacing operations.
  - Winter Park St (MP 16.439)
  - King St (MP 15.552)

## Candidate POP Project Technical Scope

- Clay Ave/Wilkinson St (MP 16.687)
- There is one road tube Traffic Monitoring Site within the project limits. No work.

### Intelligent Transportation Systems (ITS)

- Modifications to the existing signals are anticipated and systems are to be consistent with the ITS Master Plan. The Engineer;
  - Shall follow the Risk Assessment protocol, including Checklist and Systems Engineering analysis.
  - Shall designate fiber in the plans, determine any conflicts and resolve.
- Additional ITS guidance can be found here:  
[https://www.cflsmartrroads.com/projects/technical\\_docs.html#\(Designers\)](https://www.cflsmartrroads.com/projects/technical_docs.html#(Designers))

### **Lighting Scope Items:**

- No work.

### **Landscaping Scope Items:**

- No work.

### **Survey Scope Items:**

- Obtain Design Survey, collecting data for the areas and locations of proposed work. Total survey area will be determined by the Engineer based on the limits of disturbance.
  - Survey locations in relation to the State Plan Coordinate System.
  - Locate utilities as Quality Level C "QL C" and surface features including valve covers, meter boxes, manholes, etc. within the areas of proposed work.
  - Include items identified by the environmental assessment.

### **Right of Way and Mapping Scope Items:**

- No work.

### **Geotechnical and Pavement Scope Items:**

- FDOT to perform Pavement Coring Report and provide ESAL calculation and Resilient Modulus values.

### **Design Documentation:**

- POP projects are exempt from Design Variation and Exception documentation other than for ADA curb ramp requirements. If compliance with ADA curb ramp requirements is determined to be technically infeasible within the POP limitations, a Design Variation will be required.
- Design Variation Memorandum
  - None.
- Design Variation
  - None, pending ADA evaluation.
- Design Exception
  - None.

### **Additional Items Considered During Scoping:**

- There is insufficient existing available pavement width to accommodate a marked bicycle lane.
- Ensure the improved notification for the lane drop/add at Hazel Street/Clay Avenue will not require an increased CAP level.