



Project Information Session

Ad # 25542

S.R. 60 PD&E Study FPID: 452574-1-22-01

from Prairie Lake Rd. to Florida's Turnpike
Osceola County, Florida



FDOT PLEMO Team

- **Project Manager:**
 - Nicole Belian

- **Department Designee:**
 - Kellie Smith

- **TRC Members:**
 - Steven Buck
 - Joseph Fontanelli
 - Casey Lyon



Contract Information

▪ Procurement

- Letters of Response - submit to d5.profserv@dot.state.fl.us
- Three (3) firms will be shortlisted based on Letters of Response
- One (1) firm will be selected based on Oral Presentations
- Contract Limit: \$3,500,000

Procurement Questions?

Ask via email:

d5.profserv@dot.state.fl.us



Project Schedule

- **Draft Project Phased Approach**
 - **Phase 1 – Develop Viable Alternatives**
 - Data collection
 - Establish design criteria
 - Initial concept development and screening of alternatives
 - **Phase 2 – Select Preferred Alternative**
 - Alternatives Analysis
 - Public Alternatives Meeting
 - Selection of Preferred Alternative
 - **Phase 3 – Documentation of Preferred Alternative**
 - Final engineering and environmental documentation
 - Public Hearing
 - LDCA

Contract Information

▪ Work Types Advertised include:

- Major Work Types:
 - 2.0 Project Development & Environmental (PD&E) Studies
- Minor Work Types:
 - 3.2 Major Highway Design
 - 4.1.1 Miscellaneous Structures
 - 4.1.2 Minor Bridge Design
 - 4.2.1 Major Bridge Design–Concrete
 - 4.2.2 Major Bridge Design–Steel
 - 5.4 Bridge Load Rating
 - 6.1 Traffic Engineering Studies
 - 6.2 Traffic Signal Timing
 - 6.3.1 Intelligent Transportation Systems (ITS) Analysis & Design
 - 6.3.3 ITS Traffic Engineering Communications
 - 7.1 Signing, Pavement Marking & Channelization
 - 7.2 Lighting
 - 7.3 Signalization
 - 8.1 Control Surveying
 - 8.2 Design, Right of Way, Construction Surveying
 - 8.3 Photogrammetric Mapping
 - 8.4 Right of Way Mapping
 - 9.1 Soil Exploration
 - 9.2 Geotechnical Classification Lab Testing
 - 9.4.1 Standard Foundation Studies
 - 9.5 Geotech Specialty Lab Testing
 - 13.4 Systems Planning
 - 13.5 Subarea/Corridor Planning
 - 15.0 Landscape Architect

Procurement Schedule



Negotiation will begin on 12/03/2024 and end on 01/13/2025

Contract Execution on 02/05/2025

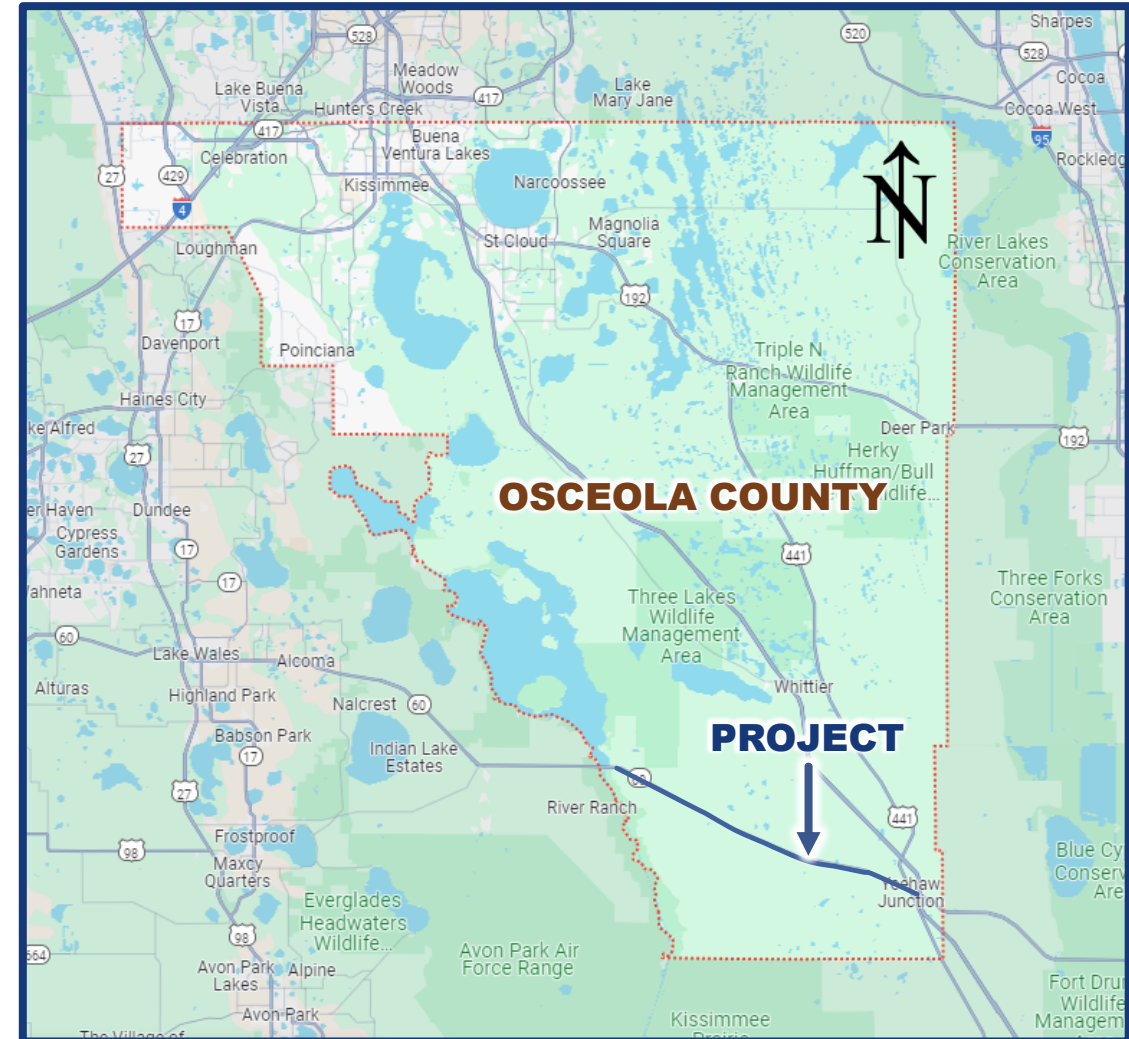
*These are tentative dates and are subject to change, frequently check FDOT websites.

Project Location

- Osceola County

Project Description

- Evaluate capacity and safety improvements for
S.R. 60 from Prairie Lake Rd To Florida's Turnpike
 - Project approximately 20 miles
 - Intersections
 - 2 signalized
 - 6 unsignalized (SLD)
 - Existing typical section
 - 2 lanes undivided rural
 - 100 feet of existing Right of Way
 - Posted speed limits 60 MPH



Purpose and Need – Capacity/Traffic and Safety Demands

■ Project Purpose and Need:

- The purpose of this project is to provide additional roadway capacity and safety improvements from Prairie Lake Road to Florida's Turnpike.
- The primary needs for this project are to meet existing and future capacity/travel demand and improve safety.



Known Issues and Needs



Check CAP website regularly for updates

▪ Capacity/Transportation:

- 2023 AADT: between 10,000 and 13,600 vpd. The roadway currently operates at LOS C and D. Based on projected growth in travel demand, the existing two-lane undivided roadway is projected to operate at LOS E in the design year of 2045.

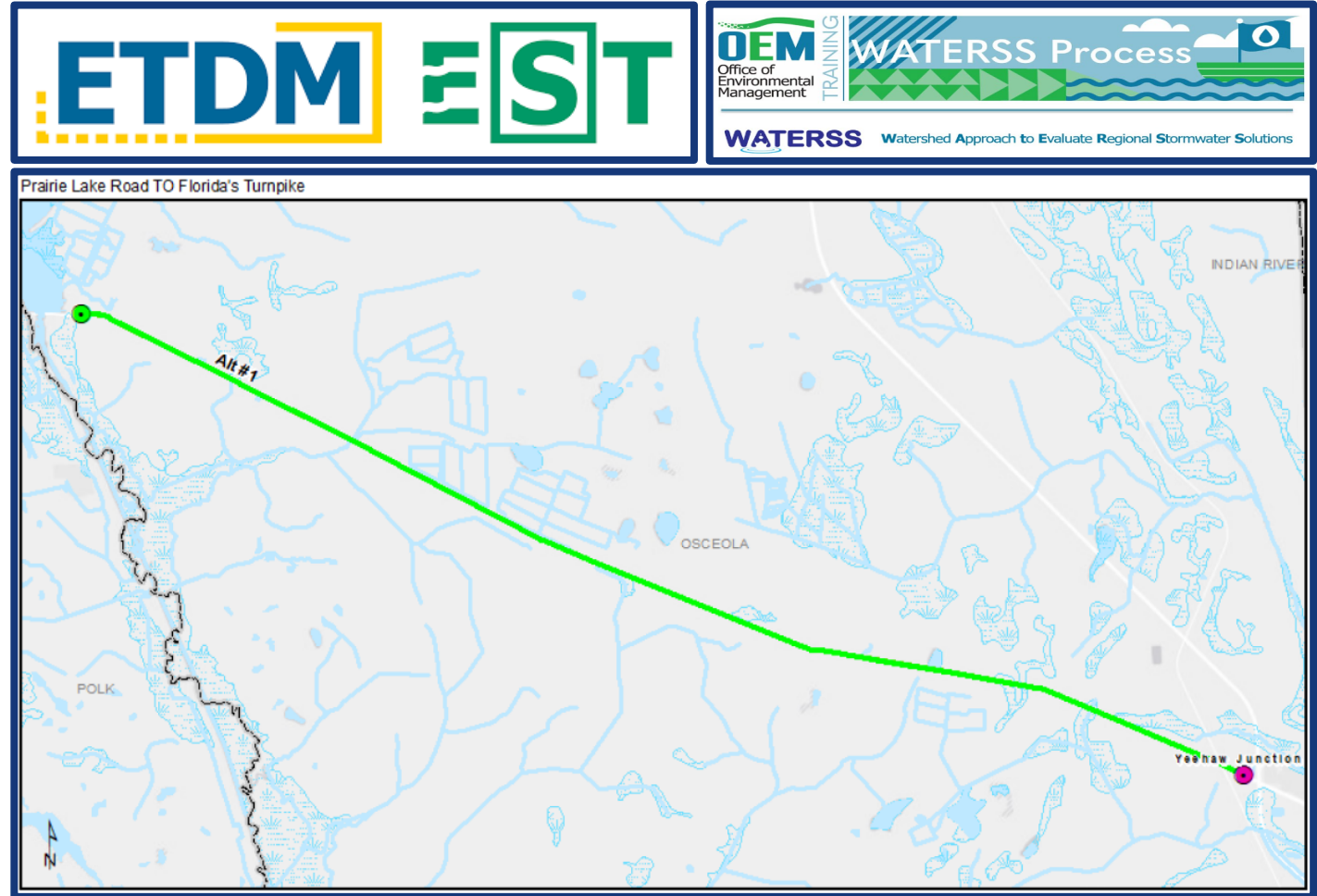
▪ Safety:

- The crash rate exceeds the statewide average.
- The fatality rate exceeds the statewide average.
- Crash data from 2018 to 2023:
 - 513 crashes
 - 10 fatalities and 183 injuries.
 - Eighty percent of the crashes resulting in a fatality were head-on collisions.

ETDM information

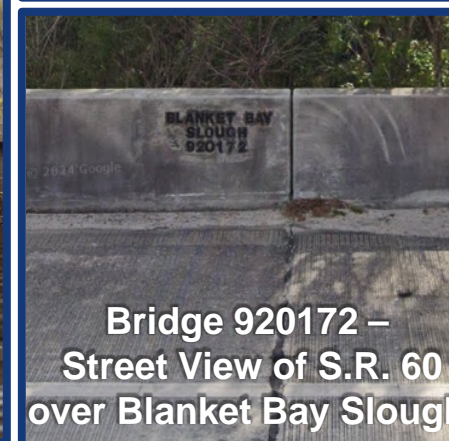
- ETDM programming screen to start late July 2024.
- The programming screen preliminary summary report anticipated to be available October 2024.
 - Report to include: Social, Economic, Land Use, Mobility, Aesthetic Effects, Farmlands, Section 4(f) potential, Historic and Archaeological sites, Recreational/Protected Lands, Wetlands/Surface Waters, Water Resources, Floodplains, Protected Species/Habitat, Noise, Air Quality, Contamination, Infrastructure, and Special Designations
 - Implementing the WATERSS (Watershed Approach to Evaluate Regional Stormwater Solutions) process

<https://etdmpub.flas-etat.org/est/>



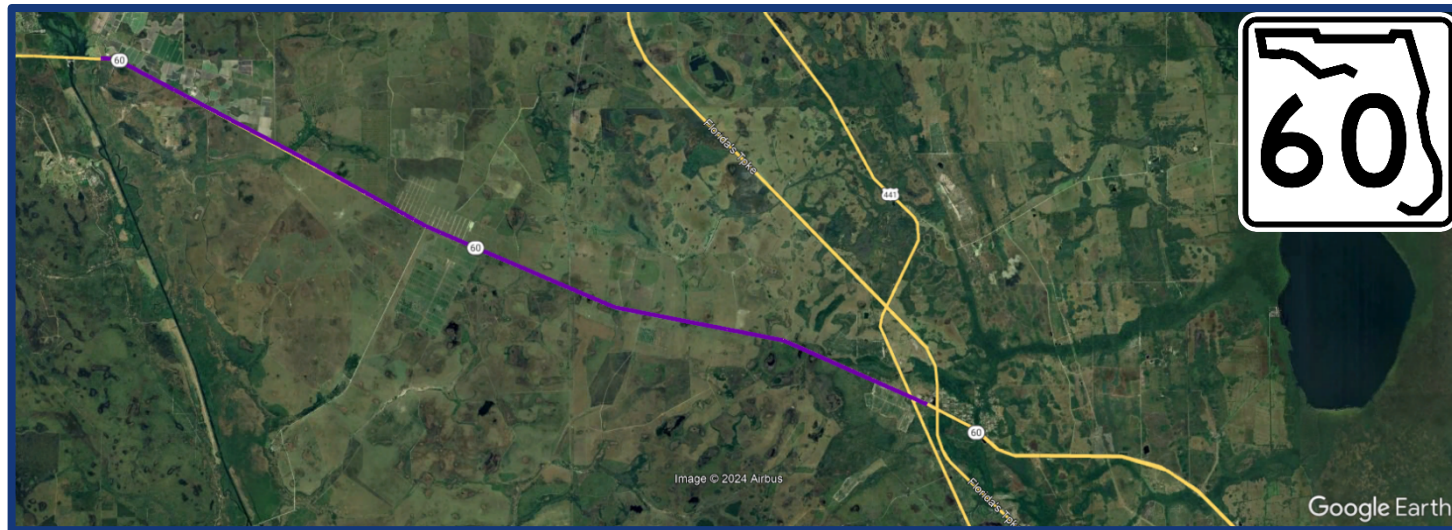
Existing Bridges

Bridge	Structure Name	Year Built	Bridge Ratings	
920172	S.R. 60 over Blanket Bay Slough	1999	Sufficiency Rating	83.5
			Health Index	93.62

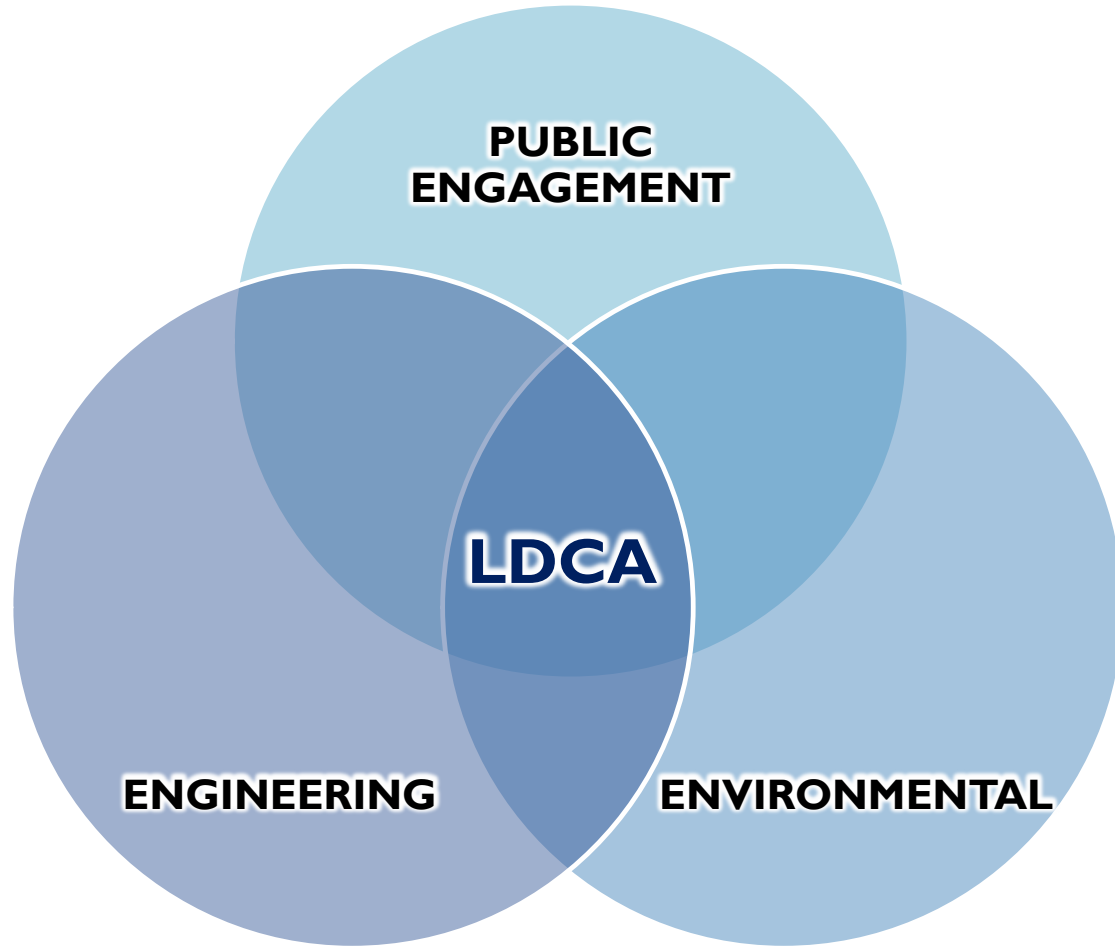


Adjacent Projects/PD&Es

- Adjacent to West: FPID 433856-1, PD&E completed in 2019; S.R. 60 from C.R. 630 to East of Kissimmee River Bridge
- Within S.R. 60 PD&E Study limits: FPID 443702-1, Passing Lanes project Letting October 30, 2024, S.R. 60 East Bound and West Bound Passing Lanes from Blanket Bay Slough to Peavine Road
- Adjacent to East: FPID 450623-1, Pavement Only Project Letting November 4, 2025, S.R. 60 from Florida's Turnpike to Indian River County Line
- Adjacent to East : FPID 423374-2, PD&E Widening of Turnpike from North of S.R. 70 to North of S.R. 60
- Adjacent to North-East: FPID 423374-3, PD&E anticipated Study completion 2nd Quarter 2026, Florida's Turnpike Mainline (S.R. 91) Widening from North of S.R. 60 to South of Clay Whaley Road



Project Information



▪ The study will include:

- Public Engagement to engage the stakeholders, agencies and others as applicable.
- Engineering to establish and analyze alternatives including the no build condition (traffic, horizontal and vertical roadway alignment, bridge alternatives analysis, utilities, access management, stormwater, etc).
- Environmental analysis to determine potential impacts on the social, economic, cultural, natural, and physical environment.

Result: Location and design concept acceptance (LDCA) in accordance with FDOT policy, procedures, and requirements.

■ Grading Criteria

■ Management (45)

- Project management and breakout of deliverables (20)
- Team dynamic (10)
- Staffing (10)
- QA/QC (5)

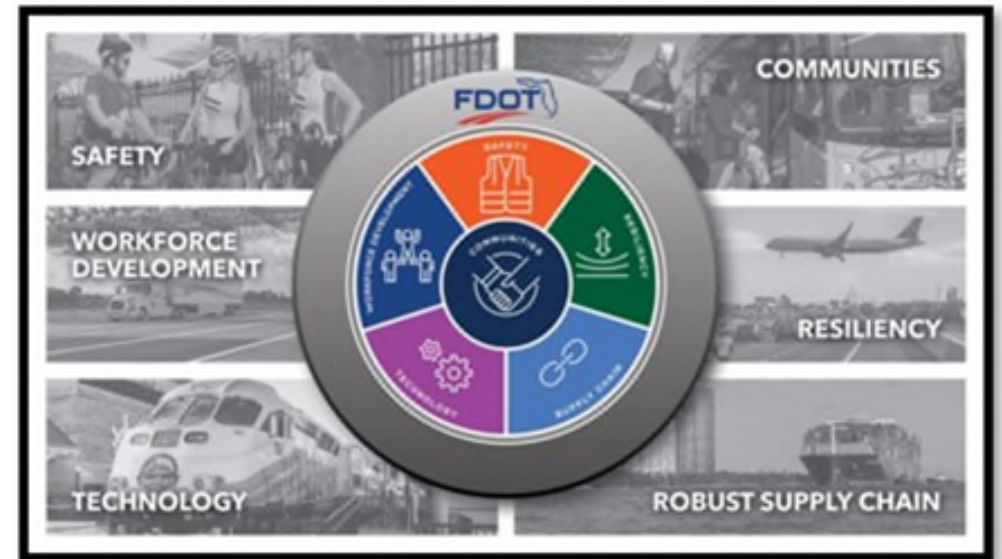
■ Technical (30)

- Project approach (15)
- Environmental approach (10)
- Innovation/Value add (5)

■ Engagement (20)

- Stakeholder and Community

■ Presentation (5)



Questions



All Letters of Response and
project questions must be submitted to:

D5.profserv@dot.state.fl.us.

This presentation will be linked
to our CAP site located at:

<https://www.cflroads.com/d5fdotdesign/index.htm>