

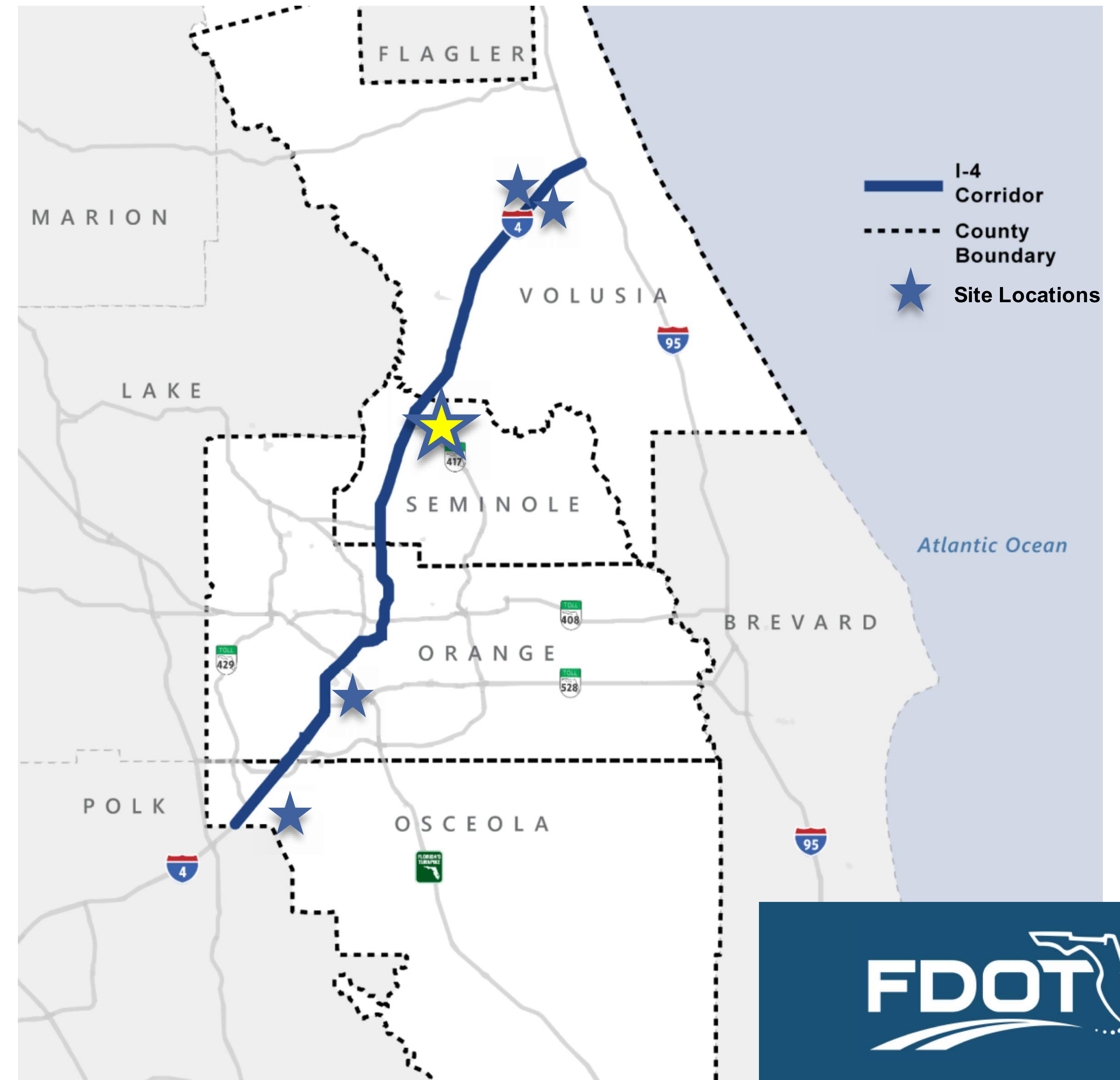
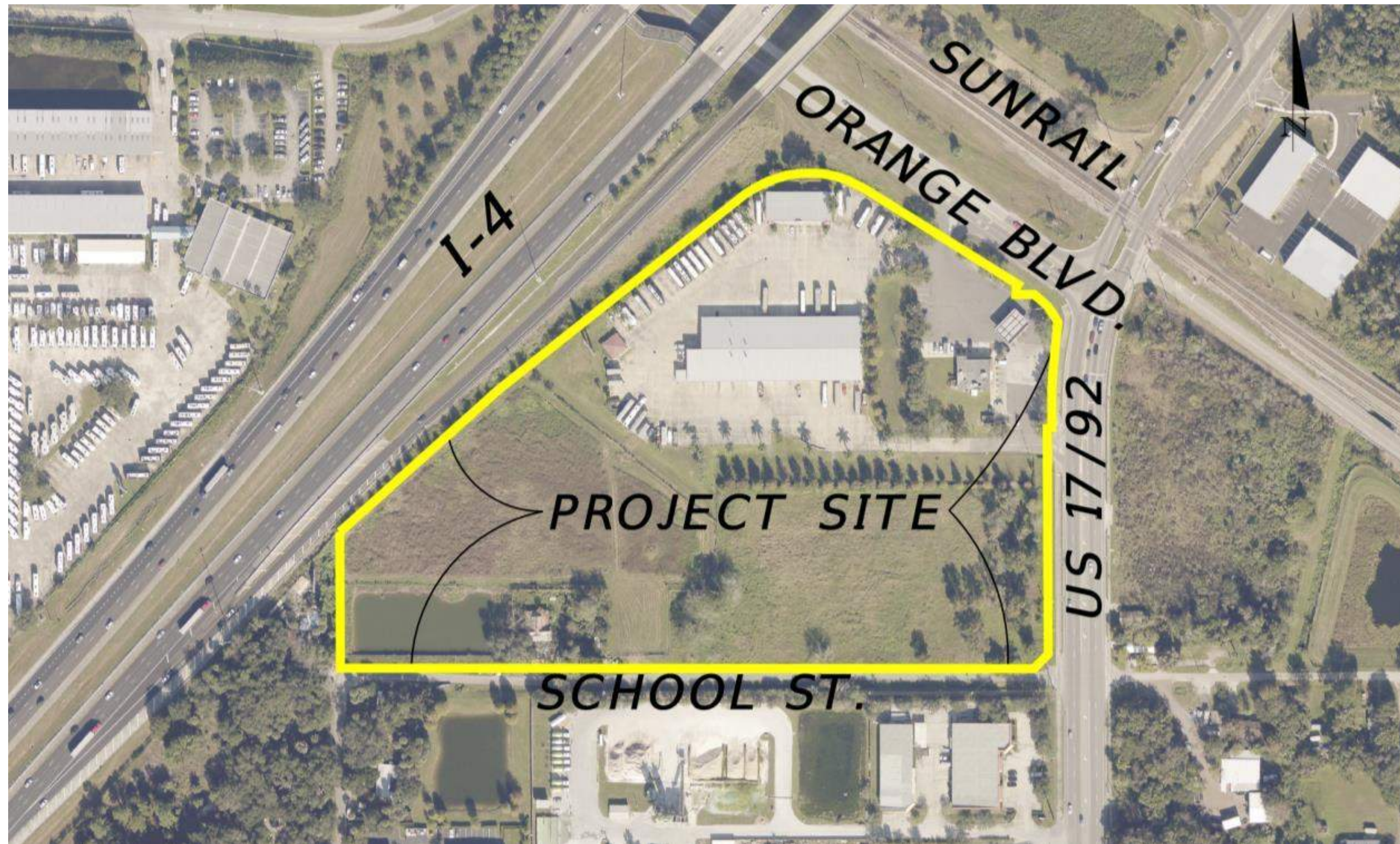
# NATIONAL TRUCK PARKING NEED

## Truck Parking - #1 Issue for Commercial Truck Drivers

- Jason's Law
- Improve Safety for All Drivers
- Reduce Impacts to Shipping Costs and the Economy
- Mitigate Law Enforcement Dilemma
  - Drive Illegally or Park Illegally
- Preservation of Public Infrastructure
- Central Florida Traffic
  - Population Growth
  - Economic Development
  - Tourism



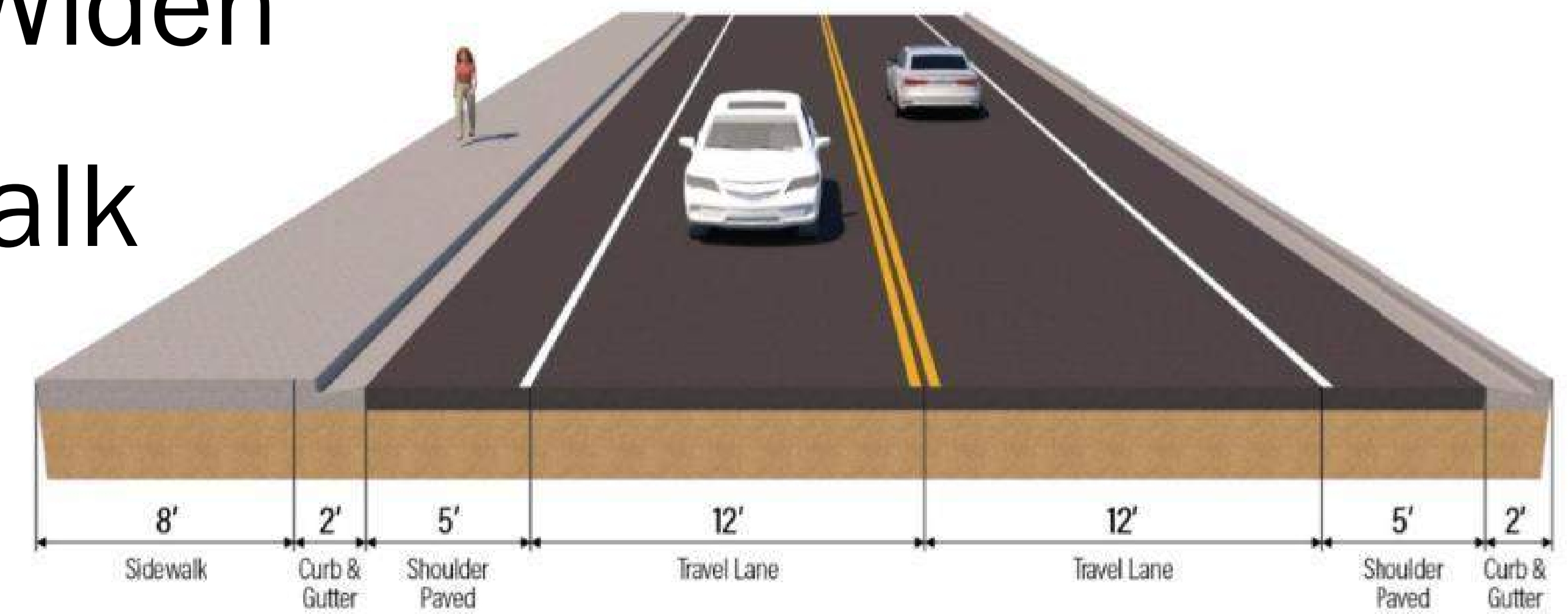
# SEMINOLE COUNTY SITE - LOCATION



# SCHOOL STREET IMPROVEMENTS



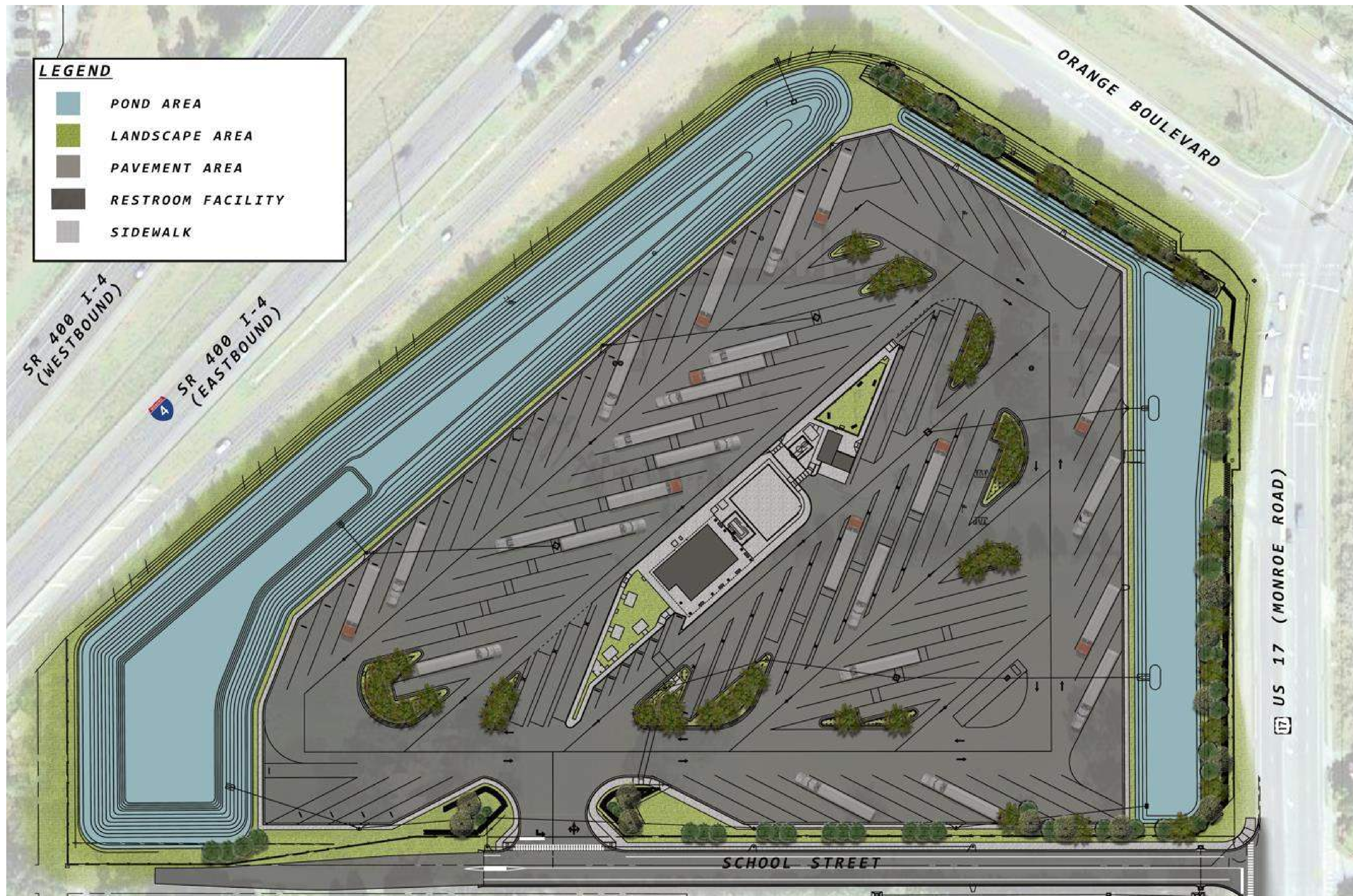
- Reconstruct and Widen
- 8-foot-wide Sidewalk



- 5-foot-wide Shoulders
- Curb and Gutter
- Direct Traffic to I-4



# SITE FACILITIES



- **Facility Type:** Designated Truck Parking
- **Site Capacity:** 132 Spaces
- **Site Area:** 17.3 acres
- **Peak-Hour:** 70 Trucks



# BUILDING PERSPECTIVE



# INTERIOR ELEVATION

