



State Road (S.R.) 40 Black Bear Trail

Corridor Planning Study

Financial Project ID (FPID) No. 436360-1

Project Visioning Team (PVT) Meeting # 2 | September 6, 2018

Public participation in this meeting is solicited without regard to race, color, national origin, age, sex, religion, disability or family status. Persons wishing to express their concerns relative to Title VI may do so by contacting:

Jennifer Smith

FDOT District Five Title VI Coordinator
719 South Woodland Boulevard
DeLand, FL 32720
jennifer.smith2@dot.state.fl.us

Jacqueline Paramore

State Title VI Coordinator
605 Suwannee Street, Mail Station 65
Tallahassee, FL 32399-0450
jacqueline@paramore@dot.state.fl.us

***All inquiries will be handled according to FDOT procedure
and in a prompt and courteous manner.***

01

Overview of Previous Efforts

02

Purpose and Need

03

Alternatives Development



01



Overview of Previous Efforts

S.R. 40 Black Bear Trail

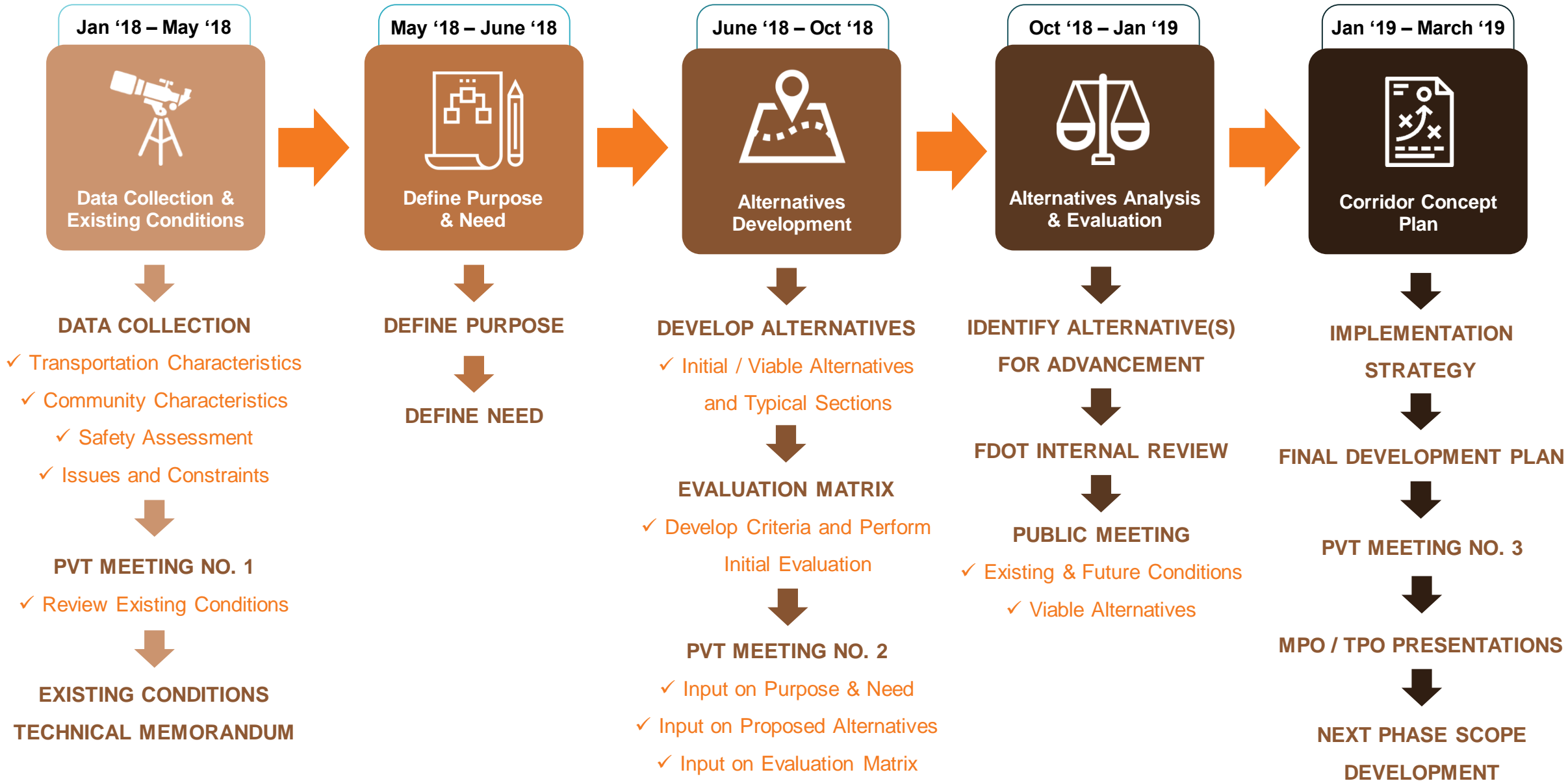
Study Area

- Levy Hammock Road to U.S. 17 along S.R. 40
- Rural Communities, Ocala National Forest
- Heavy Truck Route





Project Approach / Schedule





02



Purpose and Need

S.R. 40 Black Bear Trail

- The **purpose identifies the primary goals** of the **project** and guides the range of alternatives that will be developed and considered in response to the established need.



- Provide a **safe, comfortable**, and **accessible** paved facility for bicyclists, pedestrians, and other non-motorized users of **all ages and abilities** between Levy Hammock Road and U.S. 17.



- The **need** for the project **arises from deficiencies, issues, and/or concerns** that currently exist or are expected to occur within the project area.



Define Purpose
& Need

- **Gap in regional trail network**
 - Heart of Florida Loop Trail network
- **Lack of safe, comfortable, and accessible pedestrian and bicycle facilities**
 - Approximately 6% of study area households do not have a vehicle
 - Limited Americans with Disabilities Act (ADA) compliant connectivity between residents, community features, and conservation areas
 - Predominantly 55 MPH roadways
 - 9-16% truck traffic on roads





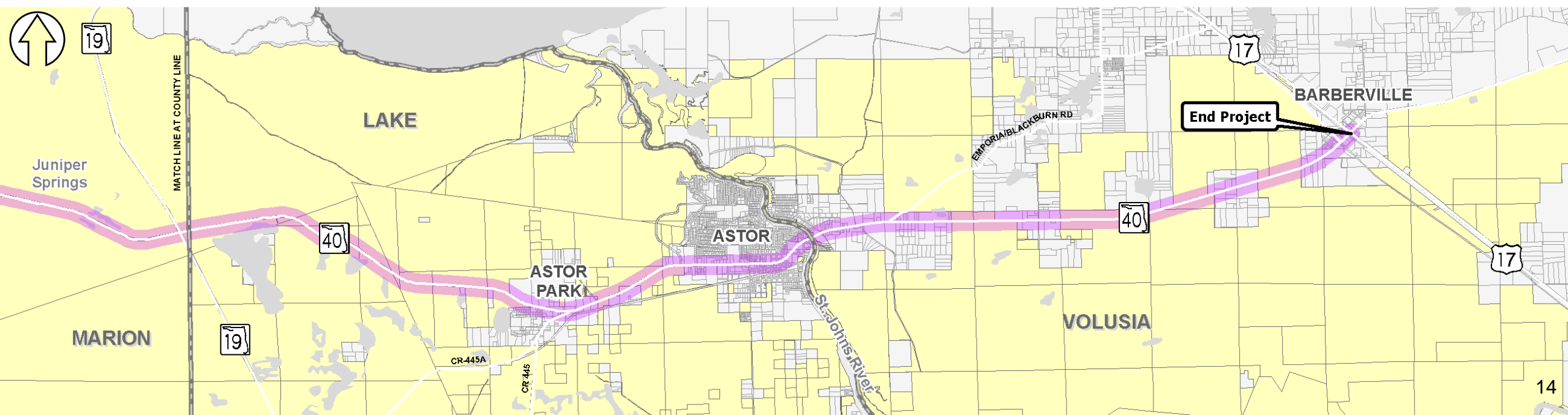
03



Alternatives Development S.R. 40 Black Bear Trail

Publicly Owned Lands


- Publicly Owned Parcel
- Privately Owned Parcel
- Study Corridor(s)




Overview of Alternatives

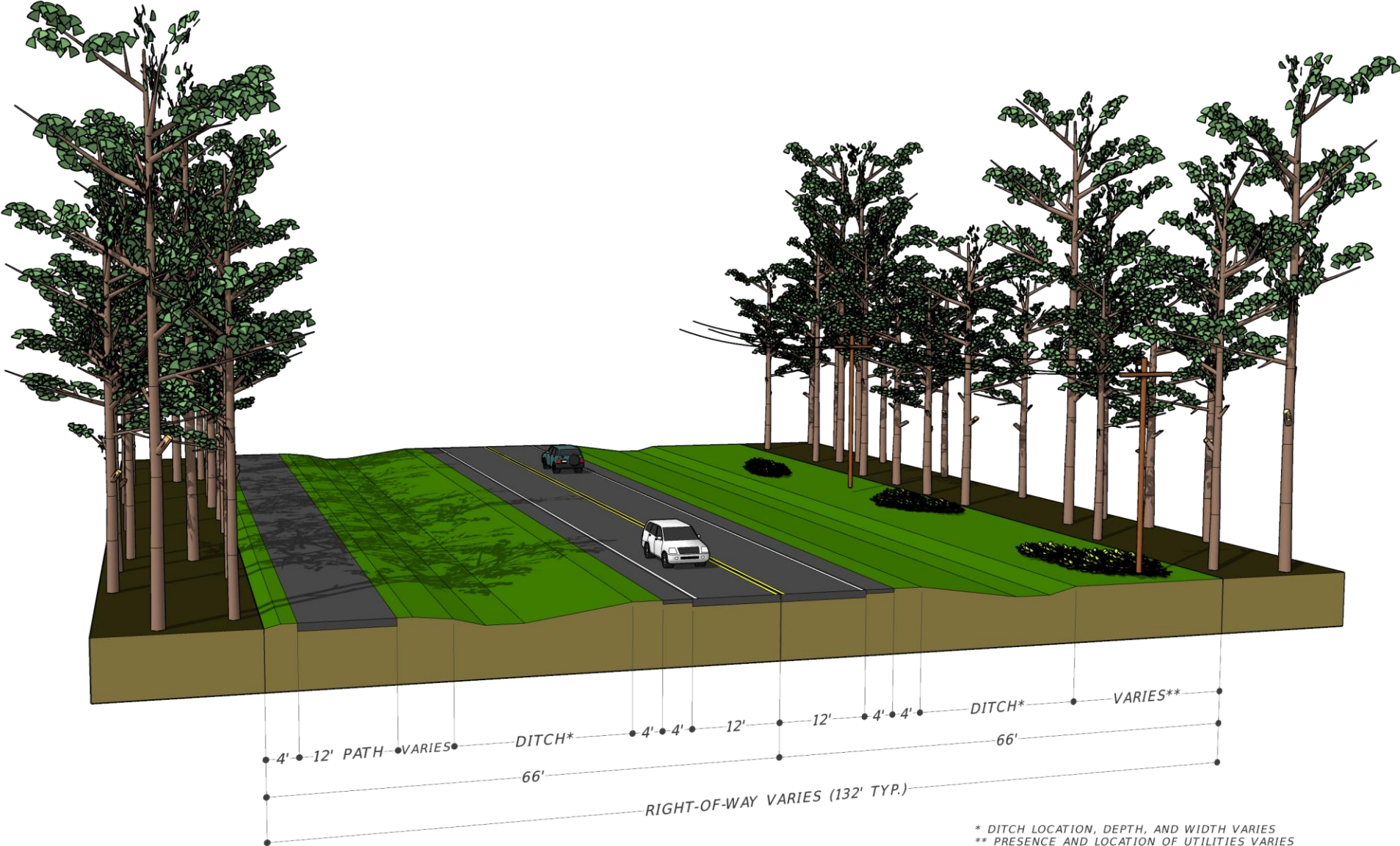
— A-B — A — B



— Alternative A – North Side of 

— Alternative B – South Side of 

Example Typical Section No. 1 – Trail within Existing Right of Way (ROW) / Easements



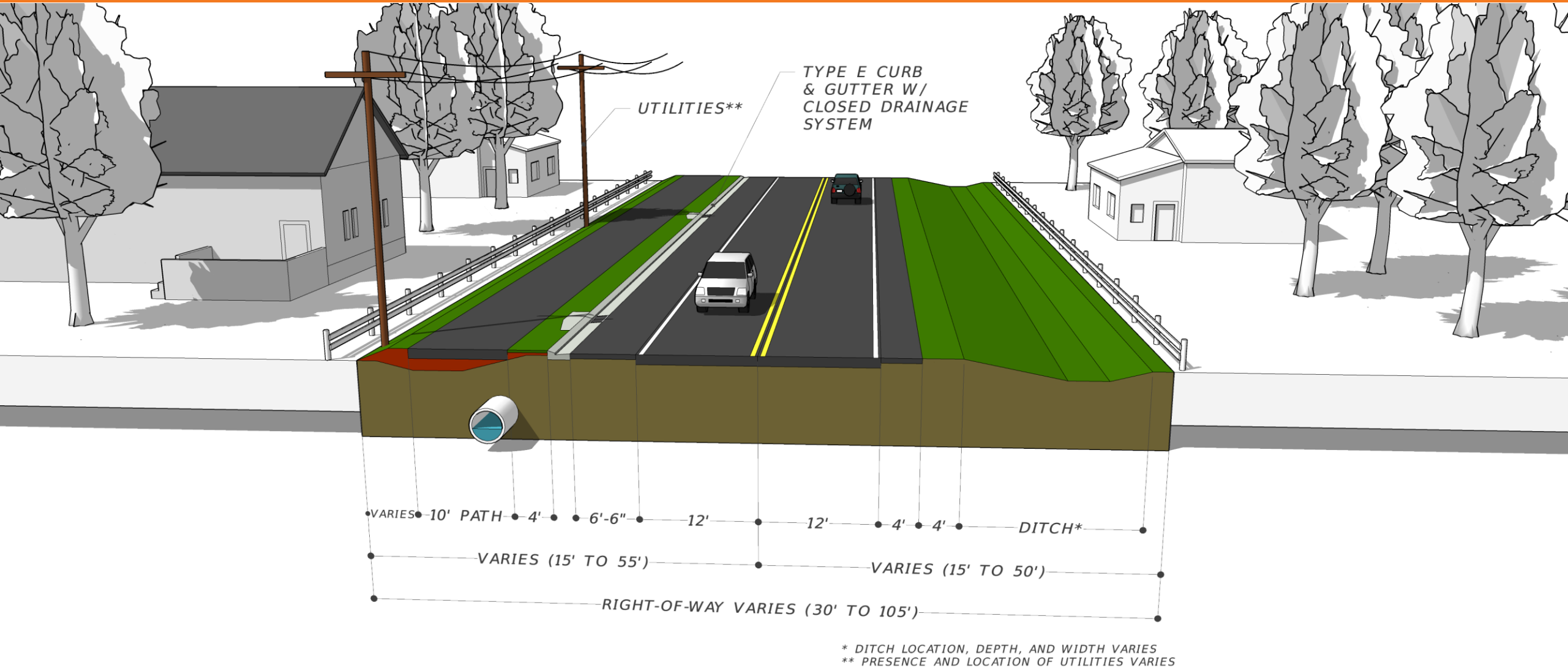
Example Typical Section No. 2 – Trail in Separate Easement



Example Typical Section No. 3 – Constrained Areas

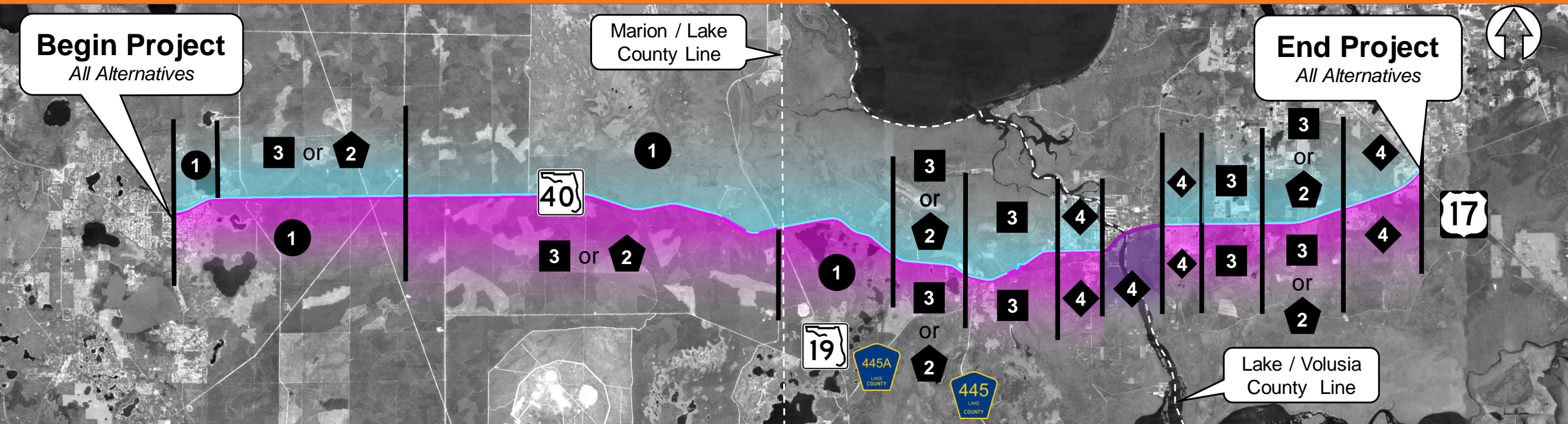


Example Typical Section No. 4 – Very Constrained



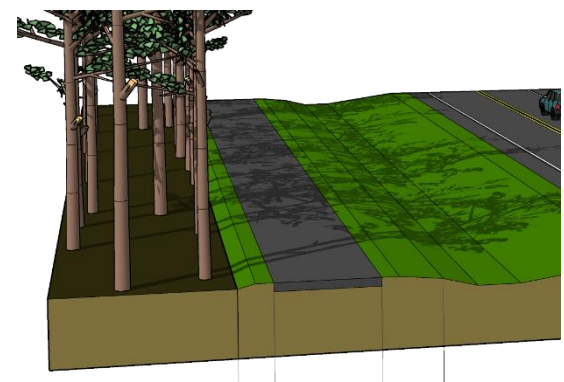
Overview of Alternatives

A-B
 A
 B

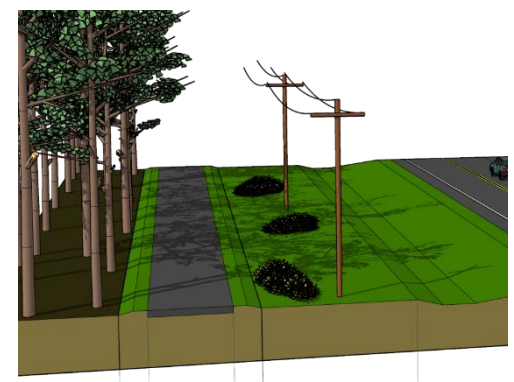


Begin Project
All Alternatives

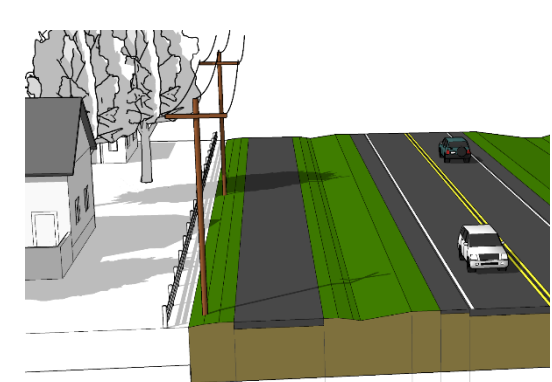
End Project
All Alternatives



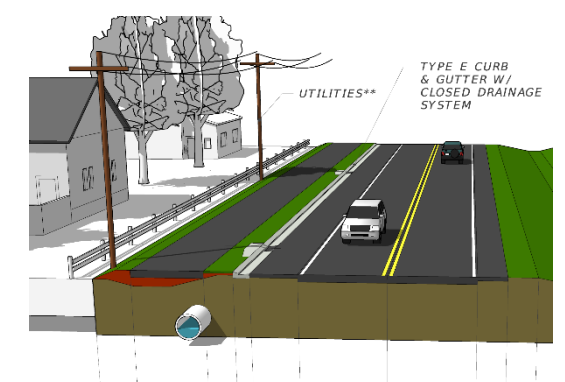
1 Trail within Existing Right of Way (ROW) / Easements



2 Trail in Separate Easement



3 Constrained Areas



4 Very Constrained Areas

Overview of Alternatives

— A-B — A — B



Overview of Alternatives

A-B A B



Overview of Alternatives

— A-B — A — B



Centennial Trailhead



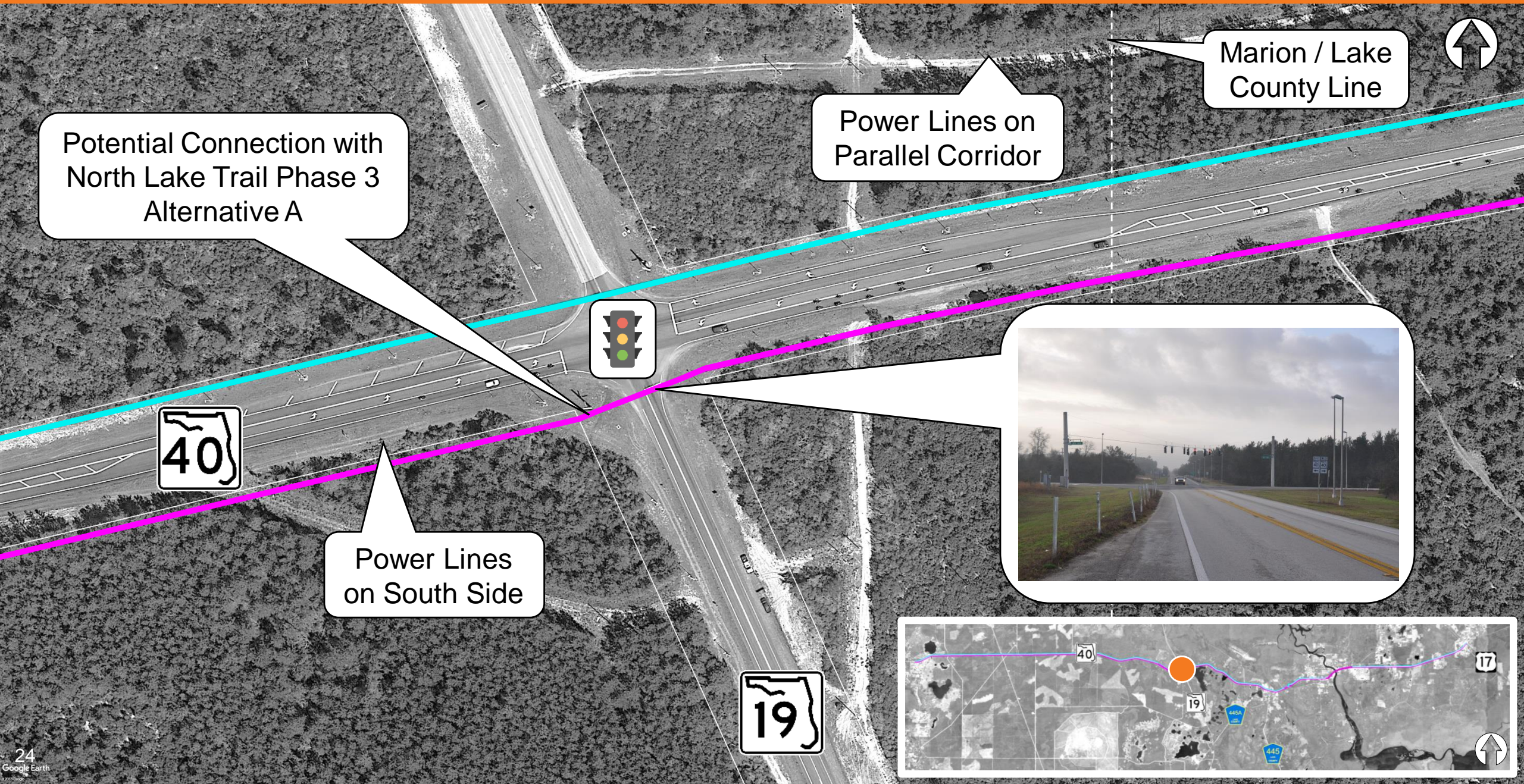
Power Lines on South Side

Juniper Springs Recreation Area



Overview of Alternatives

— A-B — A — B

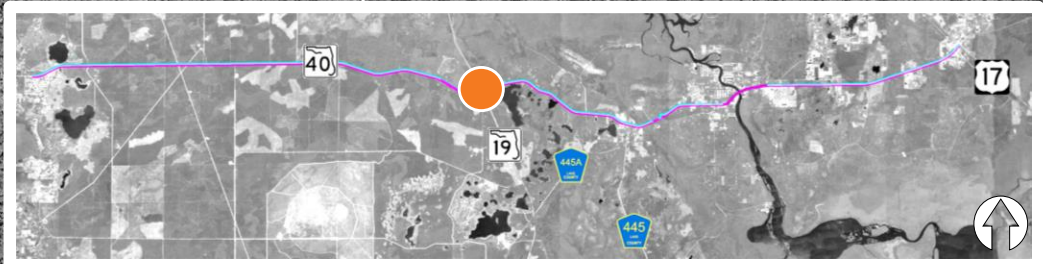


Potential Connection with North Lake Trail Phase 3 Alternative A

Power Lines on Parallel Corridor

Marion / Lake County Line

Power Lines on South Side



Overview of Alternatives

— A-B — A — B



Power Lines on Parallel Corridor



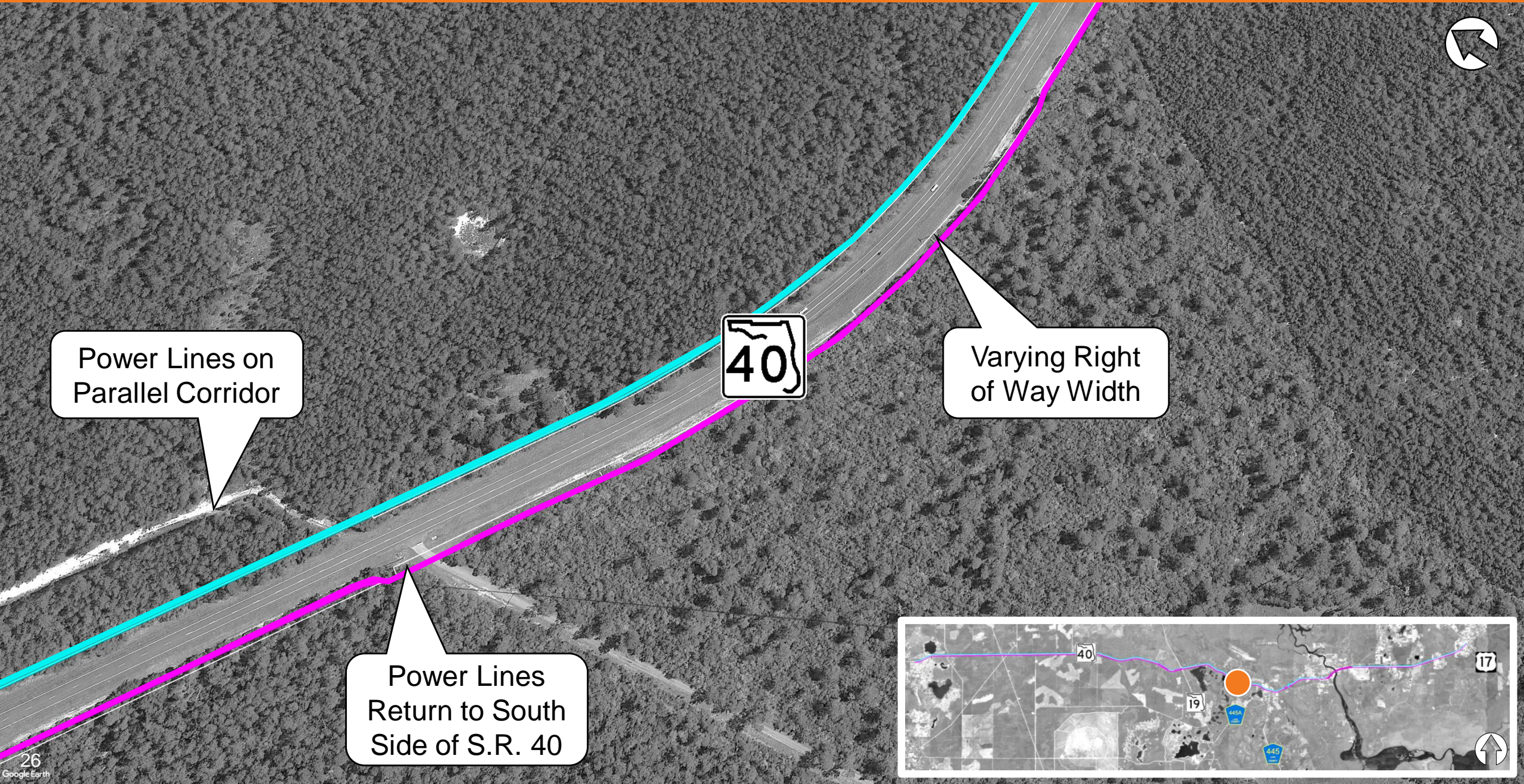
WILDCAT LAKE

Existing Parking Lot



Overview of Alternatives

— A-B — A — B



Power Lines on Parallel Corridor



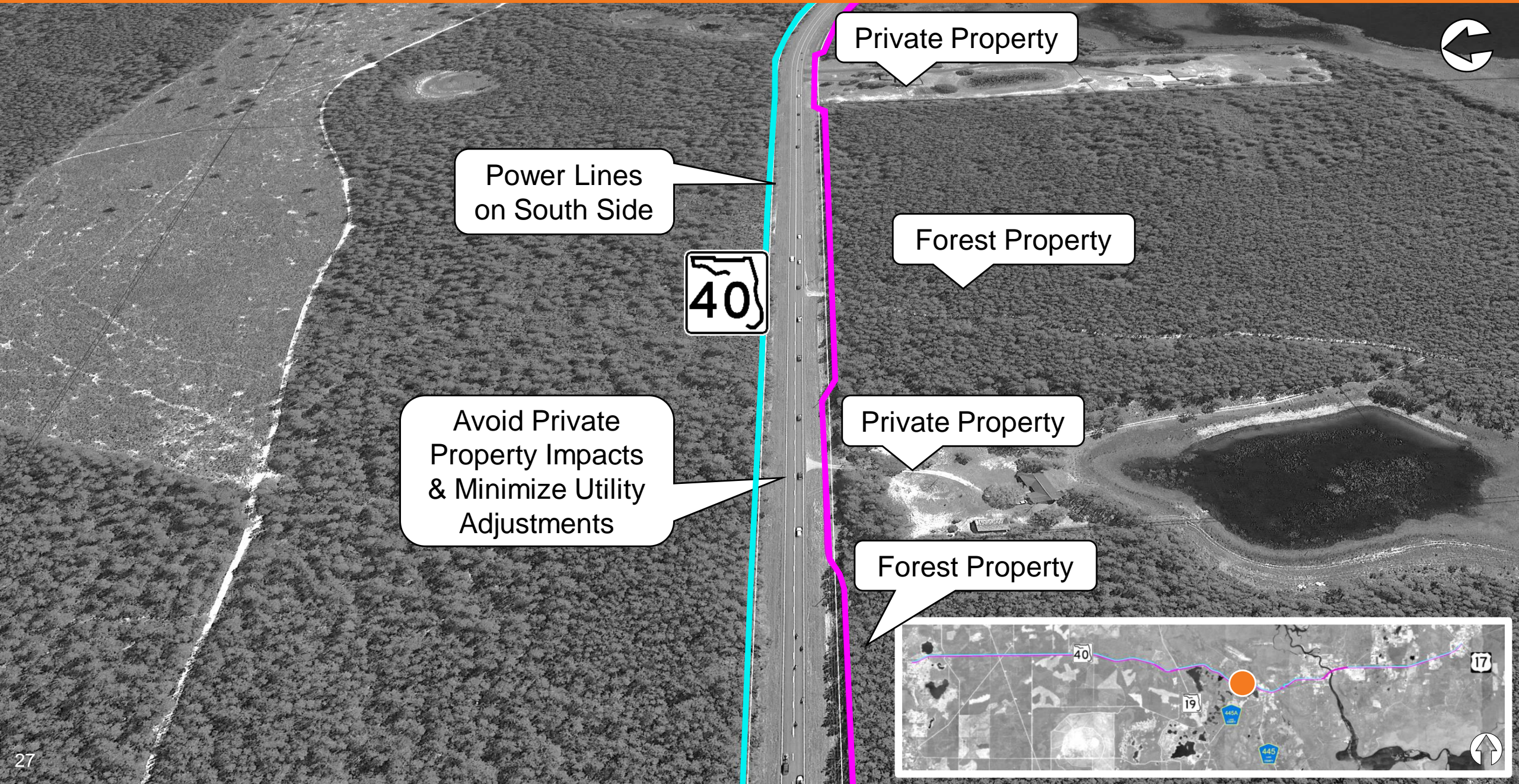
Varying Right of Way Width

Power Lines Return to South Side of S.R. 40



Overview of Alternatives

— A-B — A — B



Private Property

Power Lines
on South Side

Forest Property

Avoid Private
Property Impacts
& Minimize Utility
Adjustments

Private Property

Forest Property



Overview of Alternatives

— A-B — A — B



Potential Connection with North Lake Trail Phase 3 Alternatives B & C

WHITNEY MARIE DR

445A
LAKE COUNTY

40

ASTOR PARK

PARK RD



Overview of Alternatives

— A-B — A — B



VETERANS DR

RIVER RD

ASTOR

ALCO RD

Power Lines on South Side



40

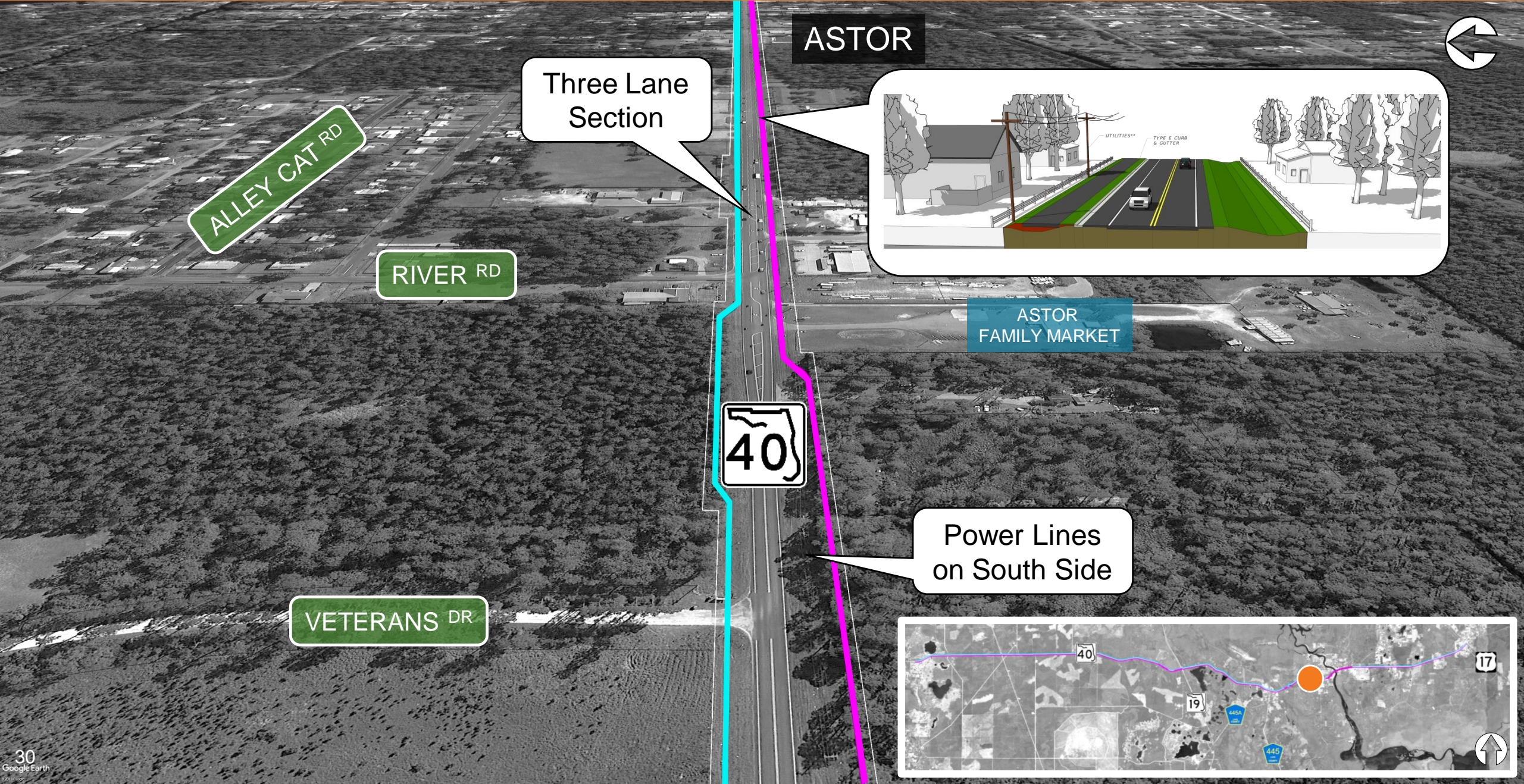
TRUCK AIDE BLVD

Fire Station



Overview of Alternatives

— A-B — A — B



ALLEY CAT RD

RIVER RD

VETERANS DR

ASTOR

Three Lane Section

ASTOR FAMILY MARKET

Power Lines on South Side



Overview of Alternatives

— A-B — A — B



Midblock Pedestrian Crossing w/ Refuge

FIRST BAPTIST CHURCH OF ASTOR

Begin Combined Alternatives

Three Lane Section

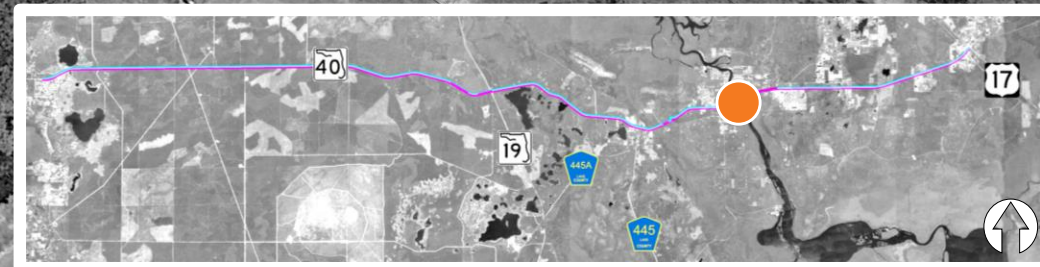


Power Lines on South Side

3rd ST

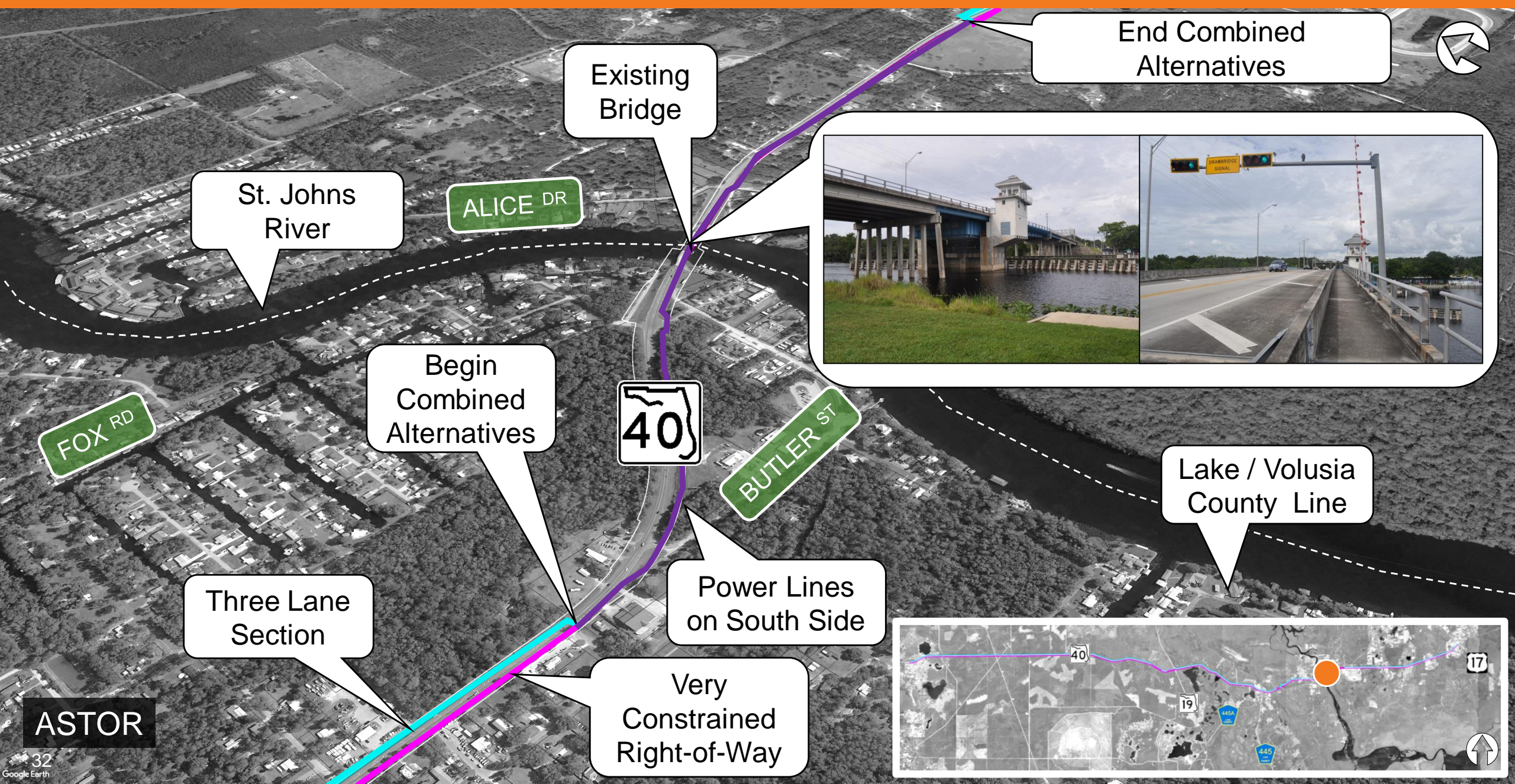
Very Constrained Right-of-Way

ASTOR



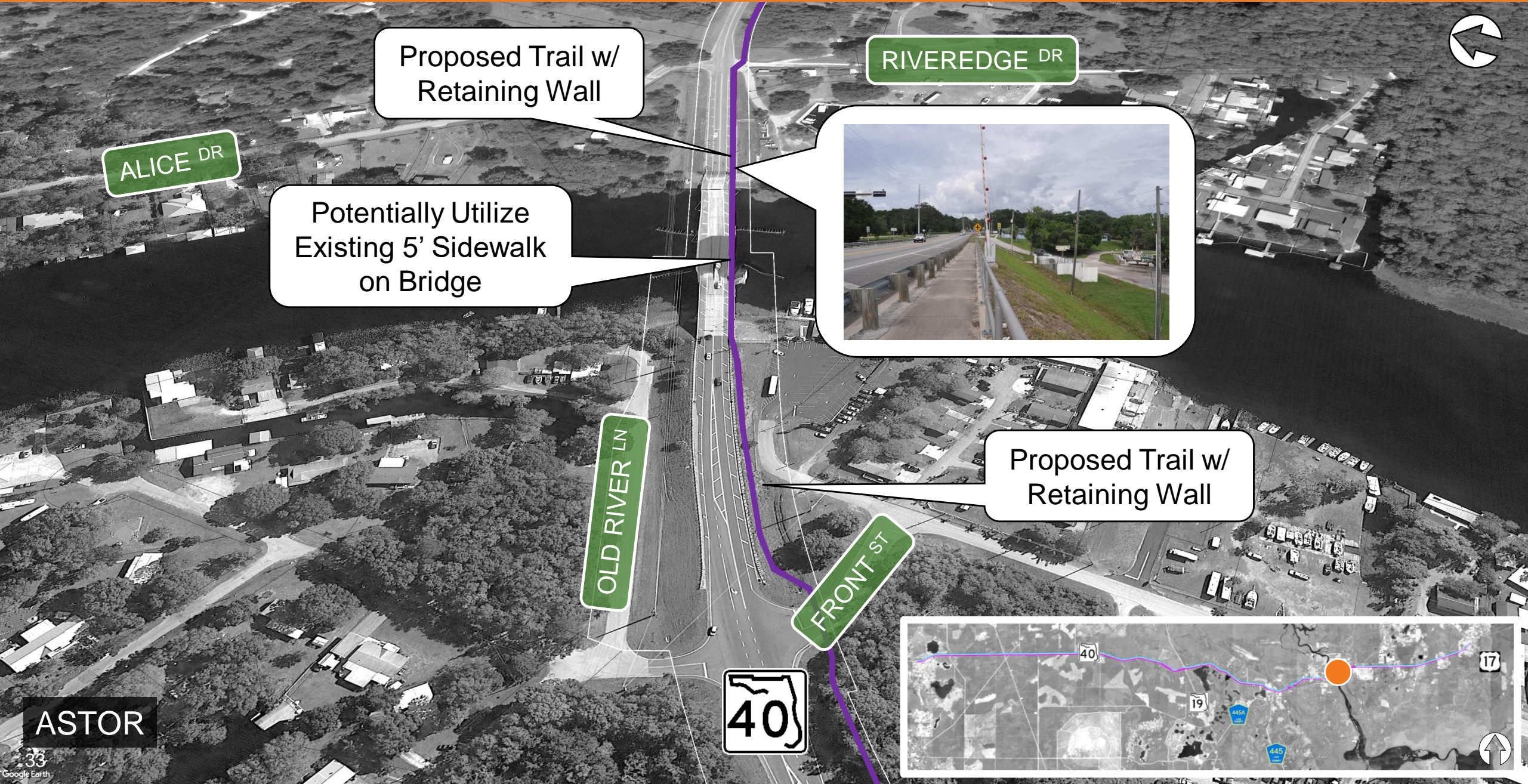
Overview of Alternatives

— A-B — A — B



Overview of Alternatives

— A-B — A — B



ALICE DR

RIVEREDGE DR

Potentially Utilize Existing 5' Sidewalk on Bridge



OLD RIVER LN

FRONT ST

Proposed Trail w/ Retaining Wall



ASTOR



Overview of Alternatives

— A-B — A — B



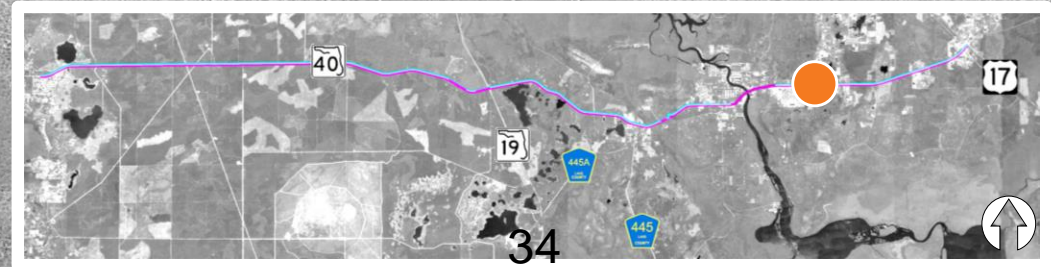
EMPORIA RD

40

Midblock Pedestrian Crossing w/ Refuge

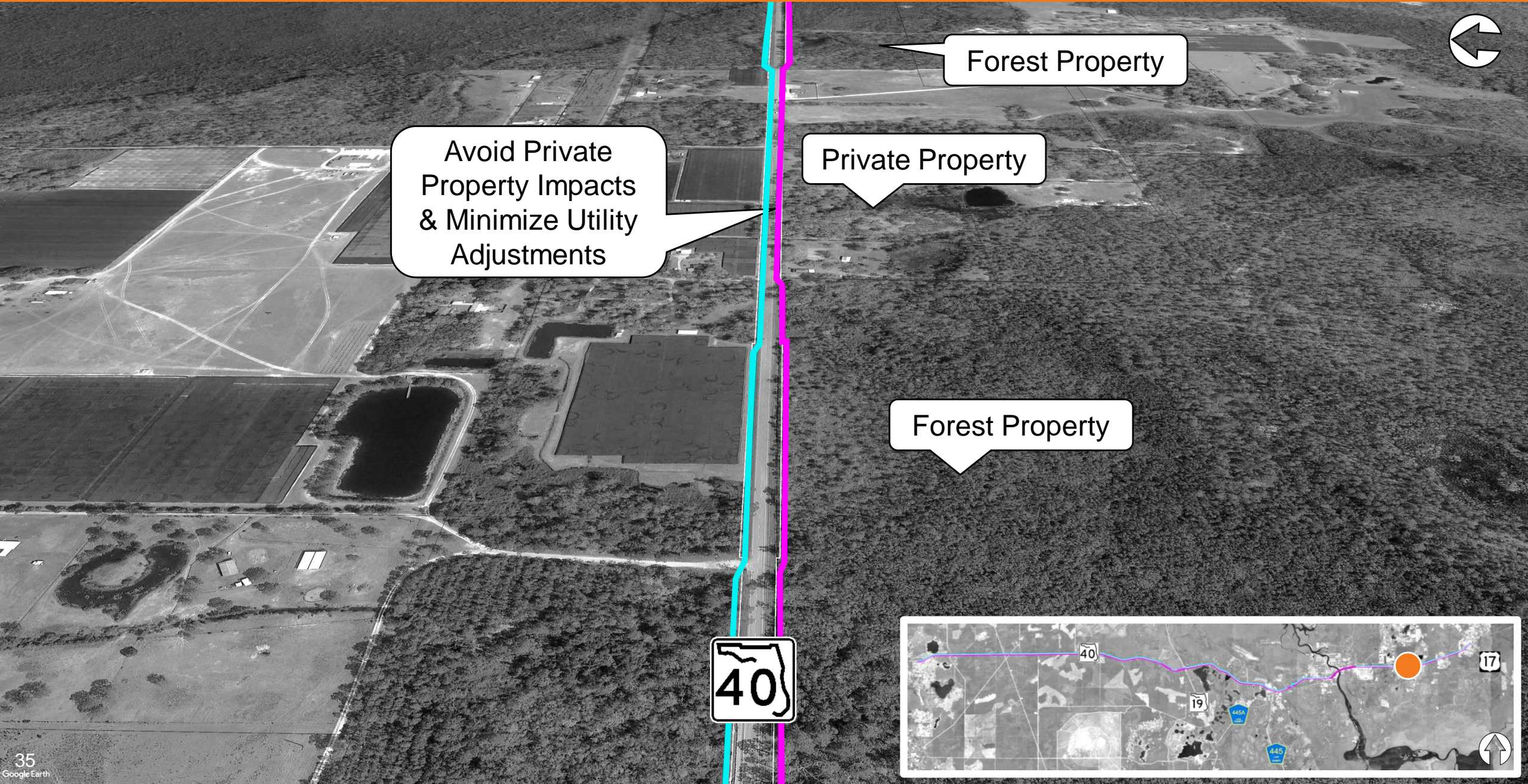


End Combined Alternatives



Overview of Alternatives

A-B A B



Forest Property

Avoid Private Property Impacts & Minimize Utility Adjustments

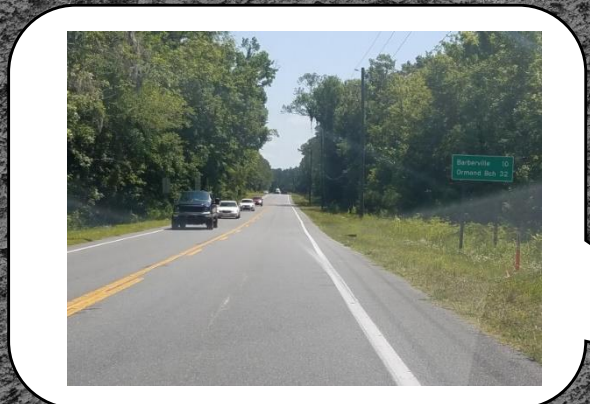
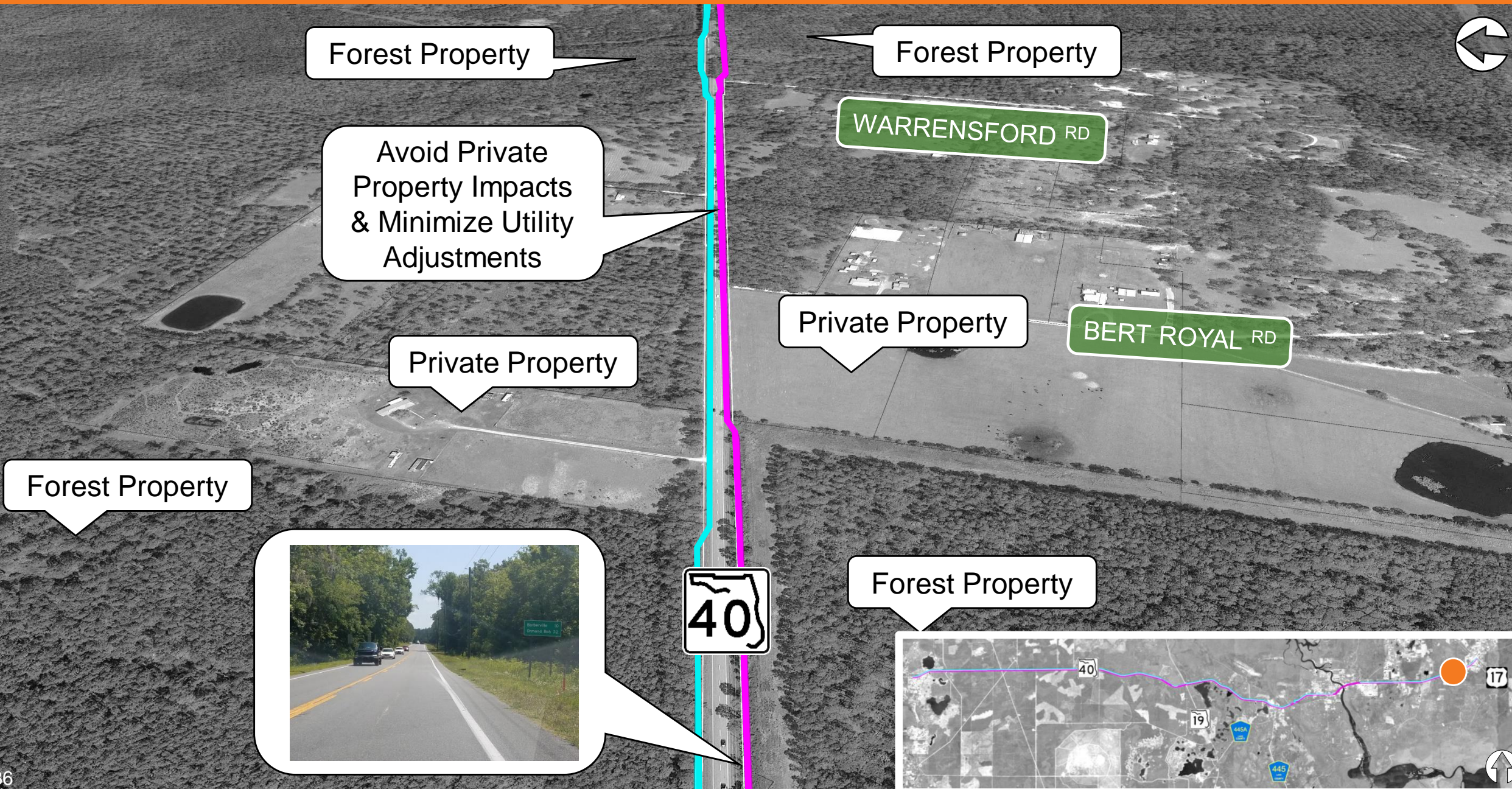
Private Property

Forest Property



Overview of Alternatives

A-B A B



Overview of Alternatives


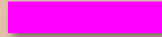
— A-B — A — B





Draft Evaluation Matrix – Trail Experience





Evaluation Criteria	Trail Project Alternatives	
	Alternative A <i>(North Side)</i> 	Alternative B <i>(South Side)</i> 
Proximity to Hiking / Biking Trails <i>(Number of Trails within 0.5 miles)</i>	2	2
Distance from Thoroughfares <i>(Weighted Average of Trail Distance from S.R. 40 in feet)</i>	34	37
Side Street / Driveway Crossings <i>(Number of Crossings)</i>	39 / 42	27 / 59



Draft Evaluation Matrix – Natural





Evaluation Criteria	Trail Project Alternatives	
	Alternative A <i>(North Side)</i> 	Alternative B <i>(South Side)</i> 
Wetland Impacts <i>(Acreage of Potential Impacts)</i>	1.4	0.5
Floodplain Impacts <i>(Acreage of Potential Impacts)</i>	6.1	6.1
Risk to Bald Eagle Nesting Sites <i>(Number of Known Sites within 1,000 feet)</i>	0	0
Habitat Fragmentation Risk <i>(Low / Medium / High)</i>	Low	Low



Draft Evaluation Matrix – Physical

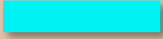


Evaluation Criteria	Trail Project Alternatives	
	Alternative A (North Side) 	Alternative B (South Side) 
Risk to Impact Contamination Sites <i>(Number of Known Sites within 500 feet)</i>	11	11
Level of Utility Impacts <i>(Low / Medium / High)</i>	Low	Medium
Potential Bridge Crossings <i>(Number of New Bridge Crossings)</i> <i>* Assumed utilizing existing St. Johns River Bridge)</i>	0*	0*
Level of Drainage Swale Impacts <i>(Low / Medium / High)</i>	Medium	Medium



Draft Evaluation Matrix – Cultural



Evaluation Criteria	Trail Project Alternatives	
	Alternative A <i>(North Side)</i> 	Alternative B <i>(South Side)</i> 
Risk of Impact Historical Sites <i>(Number of Known Sites within 500 feet)</i>	36	36
Risk of Impact to Archaeological Areas <i>(Low / Medium / High)</i>	Low	Low
Potential Conflicts With Hunting <i>(Low / Medium / High)</i>	Low	Low



Draft Evaluation Matrix – Social & Economic





Evaluation Criteria	Trail Project Alternatives	
	Alternative A (North Side)	Alternative B (South Side)
Proximity to Community Features <i>(Number of Features within 0.5 miles)</i>	17	17
Located on Same Side as Juniper Springs <i>(Yes or No)</i>	Yes	No
Located on Same Side as North Lake Trail <i>(Yes or No)</i>	No	Yes
Located on Same Side as Pioneer Settlement <i>(Yes or No)</i>	No	Yes
Nearby Households <i>(Number of Households within 0.5 miles)</i>	476	476
Total Population <i>(Population within 0.5 miles)</i>	1,208	1,208



Draft Evaluation Matrix – Traffic & Safety



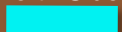




Evaluation Criteria	Trail Project Alternatives	
	Alternative A (North Side) 	Alternative B (South Side) 
Adjacent Roadway Traffic Volume <i>(Weighted Average of Annual Daily Traffic)</i>	5,750	5,750
Adjacent Roadway Posted Speed Range / Weighted Average Speed <i>(Speed in MPH)</i>	35 to 55 / 54	35 to 55 / 54
Crossings at Signalized Intersections <i>(Number of Crossings of intersection of S.R. 40 and S.R. 19)</i>	1	1
Crossings at Non-signalized / Midblock Locations <i>(Number of Crossings of S.R. 40, S.R. 19, C.R. 445A)</i>	2	1



Draft Evaluation Matrix - Highlights



Evaluation Criteria	Alternative A <i>(North Side)</i> 	Alternative B <i>(South Side)</i> 	Hybrid Alternative   
Located on Same Side as Juniper Springs <i>(Yes or No)</i>	Yes	No	Yes
Located on Same Side as North Lake Trail <i>(Yes or No)</i>	No	Yes	Yes
Located on Same Side as Pioneer Settlement <i>(Yes or No)</i>	No	Yes	Yes
Crossings at Signalized Intersections <i>(Number of Crossings of intersection of S.R. 40 and S.R. 19)</i>	1	1	2
Crossings at Non-signalized / Midblock Locations <i>(Number of Crossings of S.R. 40, S.R. 19, C.R. 445A)</i>	2	1	1
Construction Cost Comparison	\$	\$	\$

Potential for a hybrid alternative that utilizes the north side of S.R. 40 west of S.R. 19 and the south side of S.R. 40 east of S.R. 19

Contact Us!

Julia Holtzhausen

FDOT Project Manager

julia.holtzhausen@dot.state.fl.us

(386) 943 - 5058

Jeff Arms, PE, AICP, PMP

FDOT Consultant Project Manager

Jeff.Arms@hdrinc.com

(407) 420 - 4249

